



SED-24, 66,000 (0-1')
SED-24, 5,500 (1.5-2.5')

SED-23, 13,800 (0-1')
SED-23, 44 (1.5-2.5')

SED-14, 190 (0.5-1.5')
SED-14, 3 (1.5-2.5')

SED-15, 37,000 (0.5-1.5')
SED-15, 8,200 (1.5-2.5')

SED-22, 310,000 (2-3')





Legend

Total Polychlorinated Biphenyl Concentrations

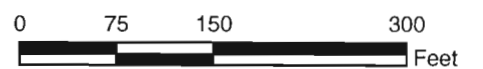
- < 10 UG/KG
- 10 - 100 UG/KG
- 100 - 1000 UG/KG
- 1000 - 10,000 UG/KG
- > 10,000 UG/KG

Location ID: SED-04, 300 (0-1')

Concentration (UG/KG): 300

Depth Interval (ft): 0-1'

NOTE: ND - Not Detected



NYSEG - TRANSIT STREET AND STATE ROAD FORMER MGP SITES
TOTAL PCBs IN SEDIMENT - AREA 3

FIGURE 67



Legend

Total Polychlorinated Biphenyl Concentrations

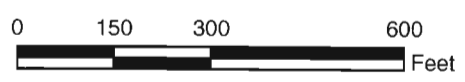
- < 10 UG/KG
- 10 - 100 UG/KG
- 100 - 1000 UG/KG
- 1000 - 10,000 UG/KG
- > 10,000 UG/KG

Location ID: SED-35, 72 (0-1')

Depth Interval (ft): (0-1')

Concentration (UG/KG):

NOTE: ND - Not Detected



NYSEG - TRANSIT STREET AND STATE ROAD FORMER MGP SITES
TOTAL PCBs IN SEDIMENT - AREA 4

FIGURE 73

TABLE 13c
SUMMARY OF DETECTED SEDIMENT SAMPLE ANALYTICAL RESULTS
COMPARED TO HUMAN HEALTH BIOACCUMULATION
NYSEG - FORMER TRANSIT STREET AND STATE ROAD MGP SITES

Location ID		SED-01	SED-02	SED-02	SED-03	SED-03
Sample ID		SED-1	SED-2 0-1	SED2 2.5-3	SED-3 0-1	SED3 3.5-4
Matrix		Sediment	Sediment	Sediment	Sediment	Sediment
Depth Interval (ft)		-	0.0-1.0	2.5-3.0	0.0-1.0	3.5-4.0
Date Sampled		04/09/05	04/09/05	04/09/05	04/09/05	04/09/05
Parameter	Units					
Volatile Organic Compounds						
Benzene	UG/KG	8 U (12.6)	8 U (15.1)	8 U (10.1)	8 U (10.6)	8 U (12.1)
Total BTEX	UG/KG	ND	ND	ND	ND	ND
Semivolatile Organic Compounds						
Acenaphthene	UG/KG	490 U	500 U	480 U	520 U	530 U
Acenaphthylene	UG/KG	490 U	500 U	480 U	520 U	530 U
Anthracene	UG/KG	490 U	500 U	480 U	520 U	530 U
Benzo(a)anthracene	UG/KG	490 U (27.3)	500 U (32.6)	400 J (22.0)	520 U (22.9)	530 U (26.3)
Benzo(a)pyrene	UG/KG	180 J (27.3)	500 U (32.6)	420 J (22.0)	520 U (22.9)	190 J (26.3)
Benzo(b)fluoranthene	UG/KG	240 J (27.3)	500 U (32.6)	620 (22.0)	520 U (22.9)	260 J (26.3)
Benzo(g,h,i)perylene	UG/KG	490 U	500 U	480 U	520 U	530 U
Benzo(k)fluoranthene	UG/KG	490 U (27.3)	500 U (32.6)	240 J (22.0)	520 U (22.9)	530 U (26.3)
bis(2-Ethylhexyl)phthalate	UG/KG	490 U	500 U	540	1,600	3,400
Butylbenzylphthalate	UG/KG	490 U	500 U	320 J	520 U	530 U
Carbazole	UG/KG	490 U	500 U	480 U	520 U	530 U
Chrysene	UG/KG	490 U (27.3)	500 U (32.6)	370 J (22.0)	520 U (22.9)	530 U (26.3)
Dibenz(a,h)anthracene	UG/KG	490 U	500 U	480 U	520 U	530 U
Dibenzofuran	UG/KG	490 U	500 U	480 U	520 U	530 U
Di-n-butylphthalate	UG/KG	490 U	500 U	480 U	520 U	530 U
Di-n-octylphthalate	UG/KG	490 U	500 U	310 J	210 J	530 U
Fluoranthene	UG/KG	420 J	200 J	750	290 J	470 J
Fluorene	UG/KG	490 U	500 U	480 U	520 U	530 U
Indeno(1,2,3-cd)pyrene	UG/KG	490 U (27.3)	500 U (32.6)	480 U (22.0)	520 U (22.9)	530 U (26.3)

Criteria- NYSDEC Technical Guidance for Screening Contaminated Sediments, Human Health Bioaccumulation, January 25, 1999.

(NV) - No Calculable Value, TOC Not Detected

Flags assigned during chemistry validation are shown.

 Concentration Exceeds Criteria.

U - Not detected above the reported quantitation limit. ; NA - Not Analyzed

J - The reported concentration is an estimated value.

D - Result reported from a secondary dilution analysis.

Only Detected Results Reported.

Detection Limits shown are PQL

TABLE 13c
SUMMARY OF DETECTED SEDIMENT SAMPLE ANALYTICAL RESULTS
COMPARED TO HUMAN HEALTH BIOACCUMULATION
NYSEG - FORMER TRANSIT STREET AND STATE ROAD MGP SITES

Location ID		SED-01	SED-02	SED-02	SED-03	SED-03
Sample ID		SED-1	SED-2 0-1	SED2 2.5-3	SED-3 0-1	SED3 3.5-4
Matrix		Sediment	Sediment	Sediment	Sediment	Sediment
Depth Interval (ft)		-	0.0-1.0	2.5-3.0	0.0-1.0	3.5-4.0
Date Sampled		04/09/05	04/09/05	04/09/05	04/09/05	04/09/05
Parameter	Units					
Semivolatile Organic Compounds						
Naphthalene	UG/KG	490 U	500 U	480 U	520 U	530 U
Phenanthrene	UG/KG	340 J	500 U	350 J	520 U	280 J
Pyrene	UG/KG	330 J	500 U	670	220 J	390 J
Total Carcinogenic PAHs	UG/KG	420	ND	2,050	ND	450
Total Non-Carcinogenic PAHs	UG/KG	1,090	200	1,770	510	1,140
Total Polycyclic Aromatic Hydrocarbons	UG/KG	1,510	200	3,820	510	1,590
Total Semivolatile Organic Compounds	UG/KG	1,510	200	4,990	2,320	4,990
Polychlorinated Biphenyls						
Aroclor 1242	UG/KG	25 U (0.02)	26 U (0.02)	120 U (0.01)	25 U (0.01)	2,400 (0.02)
Aroclor 1248	UG/KG	57 (0.02)	65 (0.02)	1,400 (0.01)	140 (0.01)	1,700 (0.02)
Aroclor 1254	UG/KG	33 (0.02)	40 (0.02)	810 (0.01)	81 (0.01)	860 (0.02)
Aroclor 1260	UG/KG	13 J (0.02)	26 U (0.02)	120 U (0.01)	25 U (0.01)	600 (0.02)
Total Polychlorinated Biphenyls	UG/KG	103	105	2,210	221	5,560
Miscellaneous Parameters						
Cyanide	MG/KG	1.5 U	1.2 U	0.95 U	1.1 U	0.99 U
Total Organic Carbon (TOC)	MG/KG	21,000	25,100	16,900	17,600	20,200
Solids, Percent	PERCENT	63.0	61.8	74.4	64.3	61.2

Criteria- NYSDEC Technical Guidance for Screening Contaminated Sediments, Human Health Bioaccumulation, January 25, 1999.

(NV) - No Calculable Value, TOC Not Detected

Flags assigned during chemistry validation are shown.



Concentration Exceeds Criteria.

U - Not detected above the reported quantitation limit. ; NA - Not Analyzed

J - The reported concentration is an estimated value.

D - Result reported from a secondary dilution analysis.

Only Detected Results Reported.

Detection Limits shown are PQL

N:\11173467\00000\08\Program\EDMS.mde

Printed: 06/24/05 3:40:27 PM

[MATRIX] = 'SE' AND ((LOGDATE) >= '04/09/05' AND (LOGDATE) <= '04/12/05') AND (PRCCODE) NOT LIKE 'MET'


TABLE 13c
SUMMARY OF DETECTED SEDIMENT SAMPLE ANALYTICAL RESULTS
COMPARED TO HUMAN HEALTH BIOACCUMULATION
NYSEG - FORMER TRANSIT STREET AND STATE ROAD MGP SITES

Location ID		SED-04	SED-04	SED-05	SED-05	SED-06
Sample ID		SED-4 0-1	SED4 3.5-4	SED-5 0-1	SED5 3.5-4	SED-06 0-1
Matrix		Sediment	Sediment	Sediment	Sediment	Sediment
Depth Interval (ft)		0.0-1.0	3.5-4.0	0.0-1.0	3.5-4.0	0.0-1.0
Date Sampled		04/09/05	04/09/05	04/09/05	04/09/05	04/11/05
Parameter	Units					
Volatile Organic Compounds						
Benzene	UG/KG	7 U (10.2)	7 U (10.2)	7 U (14.9)	8 U (13.8)	6 U (14.5)
Total BTEX	UG/KG	ND	ND	ND	ND	ND
Semivolatile Organic Compounds						
Acenaphthene	UG/KG	450 U	480 U	470 U	500 U	410 U
Acenaphthylene	UG/KG	450 U	480 U	470 U	500 U	290 J
Anthracene	UG/KG	450 U	480 U	470 U	500 U	260 J
Benzo(a)anthracene	UG/KG	230 J (22.1)	480 U (22.1)	470 U (32.4)	500 U (29.9)	880 (31.3)
Benzo(a)pyrene	UG/KG	230 J (22.1)	480 U (22.1)	470 U (32.4)	500 U (29.9)	990 (31.3)
Benzo(b)fluoranthene	UG/KG	330 J (22.1)	270 J (22.1)	470 U (32.4)	500 U (29.9)	1,200 (31.3)
Benzo(g,h,i)perylene	UG/KG	450 U	480 U	470 U	500 U	370 J
Benzo(k)fluoranthene	UG/KG	450 U (22.1)	480 U (22.1)	470 U (32.4)	500 U (29.9)	390 J (31.3)
bis(2-Ethylhexyl)phthalate	UG/KG	210 J	480 U	350 J	500 U	330 J
Butylbenzylphthalate	UG/KG	450 U	480 U	470 U	500 U	410 U
Carbazole	UG/KG	450 U	480 U	470 U	500 U	410 U
Chrysene	UG/KG	250 J (22.1)	190 J (22.1)	470 U (32.4)	500 U (29.9)	1,100 (31.3)
Dibenz(a,h)anthracene	UG/KG	450 U	480 U	470 U	500 U	410 U
Dibenzofuran	UG/KG	450 U	480 U	470 U	500 U	410 U
Di-n-butylphthalate	UG/KG	450 U	480 U	470 U	500 U	410 U
Di-n-octylphthalate	UG/KG	450 U	480 U	470 U	500 U	410 U
Fluoranthene	UG/KG	540	390 J	190 J	500 U	1,900
Fluorene	UG/KG	450 U	480 U	470 U	500 U	410 U
Indeno(1,2,3-cd)pyrene	UG/KG	450 U (22.1)	480 U (22.1)	470 U (32.4)	500 U (29.9)	330 J (31.3)

Criteria- NYSDEC Technical Guidance for Screening Contaminated Sediments, Human Health Bioaccumulation, January 25, 1999.

(NV) - No Calculable Value, TOC Not Detected

Flags assigned during chemistry validation are shown.

 Concentration Exceeds Criteria.

U - Not detected above the reported quantitation limit ; NA - Not Analyzed

J - The reported concentration is an estimated value.

D - Result reported from a secondary dilution analysis.

Only Detected Results Reported.

Detection Limits shown are PQL

TABLE 13c
SUMMARY OF DETECTED SEDIMENT SAMPLE ANALYTICAL RESULTS
COMPARED TO HUMAN HEALTH BIOACCUMULATION
NYSEG - FORMER TRANSIT STREET AND STATE ROAD MGP SITES

Location ID		SED-04	SED-04	SED-05	SED-05	SED-06
Sample ID		SED-4 0-1	SED4 3.5-4	SED-5 0-1	SED5 3.5-4	SED-06 0-1
Matrix		Sediment	Sediment	Sediment	Sediment	Sediment
Depth Interval (ft)		0.0-1.0	3.5-4.0	0.0-1.0	3.5-4.0	0.0-1.0
Date Sampled		04/09/05	04/09/05	04/09/05	04/09/05	04/11/05
Parameter	Units					
Semivolatile Organic Compounds						
Naphthalene	UG/KG	450 U	480 U	470 U	500 U	410 U
Phenanthrene	UG/KG	300 J	220 J	470 U	500 U	740
Pyrene	UG/KG	440 J	330 J	470 U	500 U	1,400
Total Carcinogenic PAHs	UG/KG	1,040	460	ND	ND	4,890
Total Non-Carcinogenic PAHs	UG/KG	1,280	940	190	ND	4,960
Total Polycyclic Aromatic Hydrocarbons	UG/KG	2,320	1,400	190	ND	9,850
Total Semivolatile Organic Compounds	UG/KG	2,530	1,400	540	ND	10,180
Polychlorinated Biphenyls						
Aroclor 1242	UG/KG	23 U (0.01)	24 U (0.01)	120 U (0.02)	25 U (0.02)	21 U (0.02)
Aroclor 1248	UG/KG	200 (0.01)	110 (0.01)	950 (0.02)	67 (0.02)	390 (0.02)
Aroclor 1254	UG/KG	100 (0.01)	76 (0.01)	490 (0.02)	110 (0.02)	21 U (0.02)
Aroclor 1260	UG/KG	23 U (0.01)	44 (0.01)	120 U (0.02)	25 U (0.02)	21 U (0.02)
Total Polychlorinated Biphenyls	UG/KG	300	230	1,440	177	390
Miscellaneous Parameters						
Cyanide	MG/KG	1.5 U	1.2 U	0.96 U	1.3 U	1.6
Total Organic Carbon (TOC)	MG/KG	17,000	17,000	24,900	23,000	24,100
Solids, Percent	PERCENT	70.1	67.8	65.2	64.7	75.6

Criteria- NYSDEC Technical Guidance for Screening Contaminated Sediments, Human Health Bioaccumulation, January 25, 1999.

(NV) - No Calculable Value, TOC Not Detected

Flags assigned during chemistry validation are shown.

 Concentration Exceeds Criteria.

U - Not detected above the reported quantitation limit. ; NA - Not Analyzed

J - The reported concentration is an estimated value.

D - Result reported from a secondary dilution analysis.

Only Detected Results Reported.

Detection Limits shown are PQL


TABLE 13c
SUMMARY OF DETECTED SEDIMENT SAMPLE ANALYTICAL RESULTS
COMPARED TO HUMAN HEALTH BIOACCUMULATION
NYSEG - FORMER TRANSIT STREET AND STATE ROAD MGP SITES

Location ID		SED-06	SED-07	SED-08	SED-09	SED-09
Sample ID		SED-06 1-2	SED-07 0-1	SED-08 0-1	SED-09 0-1	SED DUP 3
Matrix		Sediment	Sediment	Sediment	Sediment	Sediment
Depth Interval (ft)		1.0-2.0	0.0-1.0	0.0-1.0	0.0-1.0	3.0-4.0
Date Sampled		04/11/05	04/11/05	04/11/05	04/11/05	04/11/05
Parameter	Units					Field Duplicate (1-1)
Volatile Organic Compounds						
Benzene	UG/KG	6 U (14.5)	7 UJ (15.5)	8 U (14.6)	7 U (16.2)	8 U (17.6)
Total BTEX	UG/KG	ND	ND	ND	ND	ND
Semivolatile Organic Compounds						
Acenaphthene	UG/KG	410 U	460 U	260 J	490 U	520 U
Acenaphthylene	UG/KG	260 J	460 U	450	490 U	520 U
Anthracene	UG/KG	410 U	460 U	220 J	490 U	520 U
Benzo(a)anthracene	UG/KG	890 (31.3)	460 U (33.7)	1,300 (31.6)	490 U (35.1)	520 U (38.2)
Benzo(a)pyrene	UG/KG	720 (31.3)	190 J (33.7)	1,100 (31.6)	490 U (35.1)	520 U (38.2)
Benzo(b)fluoranthene	UG/KG	1,000 (31.3)	260 J (33.7)	1,400 (31.6)	490 U (35.1)	520 U (38.2)
Benzo(g,h,i)perylene	UG/KG	410 U	460 U	600	490 U	520 U
Benzo(k)fluoranthene	UG/KG	1,000 (31.3)	460 U (33.7)	1,400 (31.6)	490 U (35.1)	520 U (38.2)
bis(2-Ethylhexyl)phthalate	UG/KG	410 U	700	590	490 U	520 U
Butylbenzylphthalate	UG/KG	410 U	460 U	450 U	490 U	520 U
Carbazole	UG/KG	410 U	460 U	450 U	490 U	520 U
Chrysene	UG/KG	700 (31.3)	210 J (33.7)	1,000 (31.6)	490 U (35.1)	520 U (38.2)
Dibenz(a,h)anthracene	UG/KG	410 U	460 U	450 U	490 U	520 U
Dibenzofuran	UG/KG	410 U	460 U	450 U	490 U	520 U
Di-n-butylphthalate	UG/KG	410 U	2,400	450 U	490 U	520 U
Di-n-octylphthalate	UG/KG	410 U	460 U	450 U	490 U	520 U
Fluoranthene	UG/KG	1,400	410 J	2,200	490 U	520 U
Fluorene	UG/KG	410 U	460 U	180 J	490 U	520 U
Indeno(1,2,3-cd)pyrene	UG/KG	410 U (31.3)	460 U (33.7)	450 (31.6)	490 U (35.1)	520 U (38.2)

Criteria- NYSDEC Technical Guidance for Screening Contaminated Sediments, Human Health Bioaccumulation, January 25, 1999.

(NV) - No Calculable Value, TOC Not Detected

Flags assigned during chemistry validation are shown.

 Concentration Exceeds Criteria.

U - Not detected above the reported quantitation limit ; NA - Not Analyzed

J - The reported concentration is an estimated value.

D - Result reported from a secondary dilution analysis.

Only Detected Results Reported.

Detection Limits shown are PQL


TABLE 13c
SUMMARY OF DETECTED SEDIMENT SAMPLE ANALYTICAL RESULTS
COMPARED TO HUMAN HEALTH BIOACCUMULATION
NYSEG - FORMER TRANSIT STREET AND STATE ROAD MGP SITES

Location ID		SED-06	SED-07	SED-08	SED-09	SED-09
Sample ID		SED-06 1-2	SED-07 0-1	SED-08 0-1	SED-09 0-1	SED DUP 3
Matrix		Sediment	Sediment	Sediment	Sediment	Sediment
Depth Interval (ft)		1.0-2.0	0.0-1.0	0.0-1.0	0.0-1.0	3.0-4.0
Date Sampled		04/11/05	04/11/05	04/11/05	04/11/05	04/11/05
Parameter	Units					Field Duplicate (1-1)
Semivolatile Organic Compounds						
Naphthalene	UG/KG	410 U	460 U	450 U	490 U	520 U
Phenanthrene	UG/KG	250 J	150 J	180 J	490 U	520 U
Pyrene	UG/KG	1,200	380 J	2,400	490 U	520 U
Total Carcinogenic PAHs	UG/KG	4,310	660	6,650	ND	ND
Total Non-Carcinogenic PAHs	UG/KG	3,110	940	6,490	ND	ND
Total Polycyclic Aromatic Hydrocarbons	UG/KG	7,420	1,600	13,140	ND	ND
Total Semivolatile Organic Compounds	UG/KG	7,420	4,700	13,730	ND	ND
Polychlorinated Biphenyls						
Aroclor 1242	UG/KG	21 U (0.02)	110 U (0.02)	450 U (0.02)	24 U (0.02)	26 U (0.02)
Aroclor 1248	UG/KG	250 (0.02)	1,100 (0.02)	2,800 (0.02)	180 (0.02)	86 (0.02)
Aroclor 1254	UG/KG	21 U (0.02)	110 U (0.02)	450 U (0.02)	140 (0.02)	57 (0.02)
Aroclor 1260	UG/KG	21 U (0.02)	110 U (0.02)	450 U (0.02)	24 U (0.02)	26 U (0.02)
Total Polychlorinated Biphenyls	UG/KG	250	1,100	2,800	320	143
Miscellaneous Parameters						
Cyanide	MG/KG	1.3 U	1.3 U	1.3 U	1.5	1.4 U
Total Organic Carbon (TOC)	MG/KG	24,100	25,900	24,300	27,000	29,400
Solids, Percent	PERCENT	80.2	68.4	65.0	65.6	62.7

Criteria- NYSDEC Technical Guidance for Screening Contaminated Sediments, Human Health Bioaccumulation, January 25, 1999.

(NV) - No Calculable Value, TOC Not Detected

Flags assigned during chemistry validation are shown.

 Concentration Exceeds Criteria.

U - Not detected above the reported quantitation limit. ; NA - Not Analyzed

J - The reported concentration is an estimated value.

D - Result reported from a secondary dilution analysis.

Only Detected Results Reported.

Detection Limits shown are PQL

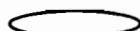
TABLE 13c
SUMMARY OF DETECTED SEDIMENT SAMPLE ANALYTICAL RESULTS
COMPARED TO HUMAN HEALTH BIOACCUMULATION
NYSEG - FORMER TRANSIT STREET AND STATE ROAD MGP SITES

Location ID		SED-09	SED-10	SED-10	SED-11	SED-12
Sample ID		SED-09 3-4	SED-10 0-1	SED-10 1-2	S11 5-1.5	SED-12 0-1
Matrix		Sediment	Sediment	Sediment	Sediment	Sediment
Depth Interval (ft)		3.0-4.0	0.0-1.0	1.0-2.0	0.5-1.5	0.0-1.0
Date Sampled		04/11/05	04/11/05	04/11/05	04/11/05	04/10/05
Parameter	Units					
Volatile Organic Compounds						
Benzene	UG/KG	8 U (17.3)	6 U (15.4)	7 U (15.7)	6 UJ (16.6)	8 U (16.3)
Total BTEX	UG/KG	ND	ND	ND	ND	ND
Semivolatile Organic Compounds						
Acenaphthene	UG/KG	500 U	410 U	420 U	430 U	2,100 U
Acenaphthylene	UG/KG	500 U	410 U	420 U	430 U	2,100 U
Anthracene	UG/KG	500 U	410 U	420 U	430 U	2,100 U
Benzo(a)anthracene	UG/KG	500 U (37.4)	230 J (33.3)	420 U (33.9)	430 U (35.9)	2,100 U (35.4)
Benzo(a)pyrene	UG/KG	500 U (37.4)	240 J (33.3)	420 U (33.9)	430 U (35.9)	820 J (35.4)
Benzo(b)fluoranthene	UG/KG	500 U (37.4)	310 J (33.3)	420 U (33.9)	430 U (35.9)	2,100 U (35.4)
Benzo(g,h,i)perylene	UG/KG	500 U	410 U	420 U	430 U	2,100 U
Benzo(k)fluoranthene	UG/KG	500 U (37.4)	410 U (33.3)	420 U (33.9)	430 U (35.9)	2,100 U (35.4)
bis(2-Ethylhexyl)phthalate	UG/KG	500 U	1,300	420 U	430 U	1,800 J
Butylbenzylphthalate	UG/KG	500 U	410 U	420 U	430 U	2,100 U
Carbazole	UG/KG	500 U	410 U	420 U	430 U	2,100 U
Chrysene	UG/KG	500 U (37.4)	240 J (33.3)	420 U (33.9)	430 U (35.9)	1,100 J (35.4)
Dibenz(a,h)anthracene	UG/KG	500 U	410 U	420 U	430 U	2,100 U
Dibenzofuran	UG/KG	500 U	410 U	420 U	430 U	2,100 U
Di-n-butylphthalate	UG/KG	500 U	410 U	420 U	430 U	2,100 U
Di-n-octylphthalate	UG/KG	500 U	410 U	420 U	430 U	2,100 U
Fluoranthene	UG/KG	500 U	460	420 U	210 J	1,900 J
Fluorene	UG/KG	500 U	410 U	420 U	430 U	2,100 U
Indeno(1,2,3-cd)pyrene	UG/KG	500 U (37.4)	410 U (33.3)	420 U (33.9)	430 U (35.9)	2,100 U (35.4)

Criteria- NYSDEC Technical Guidance for Screening Contaminated Sediments, Human Health Bioaccumulation, January 25, 1999.

(NV) - No Calculable Value, TOC Not Detected

Flags assigned during chemistry validation are shown.



Concentration Exceeds Criteria.

U - Not detected above the reported quantitation limit. ; NA - Not Analyzed

J - The reported concentration is an estimated value.

D - Result reported from a secondary dilution analysis.

Only Detected Results Reported.

Detection Limits shown are PQL

N:\11173467.00000.D6\Program\EDMS.mde

Printed: 08/24/05 3:40:28 PM

{MATRIX} = SE AND {LOGDATE} = 04/09/05 AND {LOGDATE} = 04/12/05 AND {PRCOCODE} NOT LIKE "MET"

TABLE 13c
SUMMARY OF DETECTED SEDIMENT SAMPLE ANALYTICAL RESULTS
COMPARED TO HUMAN HEALTH BIOACCUMULATION
NYSEG - FORMER TRANSIT STREET AND STATE ROAD MGP SITES

Location ID		SED-09	SED-10	SED-10	SED-11	SED-12
Sample ID		SED-09 3-4	SED-10 0-1	SED-10 1-2	S11 .5-1.5	SED-12 0-1
Matrix		Sediment	Sediment	Sediment	Sediment	Sediment
Depth Interval (ft)		3.0-4.0	0.0-1.0	1.0-2.0	0.5-1.5	0.0-1.0
Date Sampled		04/11/05	04/11/05	04/11/05	04/11/05	04/10/05
Parameter	Units					
Semivolatile Organic Compounds						
Naphthalene	UG/KG	500 U	410 U	420 U	430 U	2,100 U
Phenanthrene	UG/KG	500 U	140 J	420 U	430 U	830 J
Pyrene	UG/KG	500 U	410	420 U	190 J	1,600 J
Total Carcinogenic PAHs	UG/KG	ND	1,020	ND	ND	1,920
Total Non-Carcinogenic PAHs	UG/KG	ND	1,010	ND	400	4,330
Total Polycyclic Aromatic Hydrocarbons	UG/KG	ND	2,030	ND	400	6,250
Total Semivolatile Organic Compounds	UG/KG	ND	3,330	ND	400	8,050
Polychlorinated Biphenyls						
Aroclor 1242	UG/KG	25 U (0.02)	40 U (0.02)	21 U (0.02)	22 U (0.02)	27 U (0.02)
Aroclor 1248	UG/KG	27 (0.02)	400 (0.02)	240 (0.02)	190 (0.02)	330 (0.02)
Aroclor 1254	UG/KG	22 J (0.02)	270 (0.02)	120 (0.02)	98 (0.02)	150 (0.02)
Aroclor 1260	UG/KG	25 U (0.02)	40 U (0.02)	21 U (0.02)	22 U (0.02)	27 U (0.02)
Total Polychlorinated Biphenyls	UG/KG	49	670	360	288	480
Miscellaneous Parameters						
Cyanide	MG/KG	1.6 U	1.1 U	1.3 U	1.4 U	1.6 U
Total Organic Carbon (TOC)	MG/KG	28,800	25,600	26,100	27,600	27,200
Solids, Percent	PERCENT	62.3	74.5	73.5	74.9	60.3

Criteria- NYSDEC Technical Guidance for Screening Contaminated Sediments, Human Health Bioaccumulation, January 25, 1999.

(NV) - No Calculable Value, TOC Not Detected

Flags assigned during chemistry validation are shown.

 Concentration Exceeds Criteria.

U - Not detected above the reported quantitation limit. ; NA - Not Analyzed

J - The reported concentration is an estimated value.

D - Result reported from a secondary dilution analysis.

Only Detected Results Reported.

Detection Limits shown are PQL

N:\11173467_00000\DB\Program\EDMS.mde
 Printed: 08/24/05 3:40:28 PM

[MATRIX] = 'SE' AND ([LOGDATE] >= #04/09/05# AND [LOGDATE] <= #04/12/05#) AND [PRCCODE] NOT LIKE 'MET'

TABLE 13c
SUMMARY OF DETECTED SEDIMENT SAMPLE ANALYTICAL RESULTS
COMPARED TO HUMAN HEALTH BIOACCUMULATION
NYSEG - FORMER TRANSIT STREET AND STATE ROAD MGP SITES

Location ID		SED-13	SED-13	SED-14	SED-14	SED-15
Sample ID		SED-13 0-1	SED-13 2-3	S14 5-1.5	S141.5-2.5	S15 5-1.5
Matrix		Sediment	Sediment	Sediment	Sediment	Sediment
Depth Interval (ft)		0.0-1.0	2.0-3.0	0.5-1.5	1.5-2.5	0.5-1.5
Date Sampled		04/10/05	04/10/05	04/10/05	04/10/05	04/10/05
Parameter	Units					
Volatile Organic Compounds						
Benzene	UG/KG	9 U (16.8)	7 U (19.4)	7 U (9.6)	7 U (10.5)	7 U (8.0)
Total BTEX	UG/KG	ND	ND	ND	ND	ND
Semivolatile Organic Compounds						
Acenaphthene	UG/KG	590 U	2,000 U	480 U	460 U	4,400 U
Acenaphthylene	UG/KG	590 U	2,000 U	480 U	460 U	2,100 J
Anthracene	UG/KG	590 U	2,000 U	480 U	460 U	4,400 U
Benzo(a)anthracene	UG/KG	590 U (36.4)	2,000 U (42.0)	480 U (20.8)	460 U (22.8)	7,800 (17.4)
Benzo(a)pyrene	UG/KG	290 J (36.4)	2,000 U (42.0)	480 U (20.8)	460 U (22.8)	6,600 (17.4)
Benzo(b)fluoranthene	UG/KG	360 J (36.4)	2,000 U (42.0)	480 U (20.8)	460 U (22.8)	7,300 (17.4)
Benzo(g,h,i)perylene	UG/KG	590 U	2,000 U	480 U	460 U	4,400 U
Benzo(k)fluoranthene	UG/KG	590 U (36.4)	2,000 U (42.0)	480 U (20.8)	460 U (22.8)	2,200 J (17.4)
bis(2-Ethylhexyl)phthalate	UG/KG	280 J	1,600 J	480 U	460 U	8,400
Butylbenzylphthalate	UG/KG	590 U	2,000 U	480 U	460 U	2,600 J
Carbazole	UG/KG	590 U	2,000 U	480 U	460 U	4,400 U
Chrysene	UG/KG	400 J (36.4)	2,000 U (42.0)	480 U (20.8)	460 U (22.8)	6,200 (17.4)
Dibenz(a,h)anthracene	UG/KG	590 U	2,000 U	480 U	460 U	4,400 U
Dibenzofuran	UG/KG	590 U	2,000 U	480 U	460 U	4,400 U
Di-n-butylphthalate	UG/KG	590 U	2,000 U	480 U	460 U	4,400 U
Di-n-octylphthalate	UG/KG	590 U	2,000 U	480 U	460 U	4,400 U
Fluoranthene	UG/KG	730	1,200 J	220 J	460 U	11,000
Fluorene	UG/KG	590 U	2,000 U	480 U	460 U	4,400 U
Indeno(1,2,3-cd)pyrene	UG/KG	590 U (36.4)	2,000 U (42.0)	480 U (20.8)	460 U (22.8)	4,400 U (17.4)

Criteria- NYSDEC Technical Guidance for Screening Contaminated Sediments, Human Health Bioaccumulation, January 25, 1999.

(NV) - No Calculable Value, TOC Not Detected

Flags assigned during chemistry validation are shown.

 Concentration Exceeds Criteria.

U - Not detected above the reported quantitation limit. ; NA - Not Analyzed

J - The reported concentration is an estimated value.

D - Result reported from a secondary dilution analysis.

Only Detected Results Reported.

Detection Limits shown are PQL

N:\11173467.0000\06\Program\EDMS.mde
Printed: 06/24/05 3:40:28 PM

{MATRIX} * SE AND ((LOGDATE) >> #04/09/05# AND (LOGDATE) << #04/12/05#) AND (PRCCODE) NOT LIKE "MET"

TABLE 13c
SUMMARY OF DETECTED SEDIMENT SAMPLE ANALYTICAL RESULTS
COMPARED TO HUMAN HEALTH BIOACCUMULATION
NYSEG - FORMER TRANSIT STREET AND STATE ROAD MGP SITES

Location ID		SED-13	SED-13	SED-14	SED-14	SED-15
Sample ID		SED-13 0-1	SED-13 2-3	S14 .5-1.5	S141.5-2.5	S15 .5-1.5
Matrix		Sediment	Sediment	Sediment	Sediment	Sediment
Depth Interval (ft)		0.0-1.0	2.0-3.0	0.5-1.5	1.5-2.5	0.5-1.5
Date Sampled		04/10/05	04/10/05	04/10/05	04/10/05	04/10/05
Parameter	Units					
Semivolatile Organic Compounds						
Naphthalene	UG/KG	590 U	2,000 U	480 U	460 U	4,400 U
Phenanthrene	UG/KG	360 J	2,000 U	480 U	460 U	4,200 J
Pyrene	UG/KG	590	1,000 J	180 J	460 U	12,000
Total Carcinogenic PAHs	UG/KG	1,050	ND	ND	ND	30,100
Total Non-Carcinogenic PAHs	UG/KG	1,680	2,200	400	ND	29,300
Total Polycyclic Aromatic Hydrocarbons	UG/KG	2,730	2,200	400	ND	59,400
Total Semivolatile Organic Compounds	UG/KG	3,010	3,800	400	ND	70,400
Polychlorinated Biphenyls						
Aroclor 1242	UG/KG	30 U (0.02)	4,000 (0.03)	24 U (0.01)	23 U (0.01)	21,000 (0.01)
Aroclor 1248	UG/KG	53 (0.02)	250 U (0.03)	190 (0.01)	7.0 J (0.01)	2,200 U (0.01)
Aroclor 1254	UG/KG	31 (0.02)	970 (0.03)	24 U (0.01)	23 U (0.01)	16,000 (0.01)
Aroclor 1260	UG/KG	30 U (0.02)	250 U (0.03)	24 U (0.01)	23 U (0.01)	2,200 U (0.01)
Total Polychlorinated Biphenyls	UG/KG	84	4,970	190	7	37,000
Miscellaneous Parameters						
Cyanide	MG/KG	1.3 U	1.5 U	0.82 U	1.3 U	1.5 U
Total Organic Carbon (TOC)	MG/KG	28,000	32,300	16,000	17,500	13,400
Solids, Percent	PERCENT	54.9	63.9	69.2	66.3	68.4

Criteria- NYSDEC Technical Guidance for Screening Contaminated Sediments, Human Health Bioaccumulation, January 25, 1999.

(NV) - No Calculable Value, TOC Not Detected

Flags assigned during chemistry validation are shown.

 Concentration Exceeds Criteria.

U - Not detected above the reported quantitation limit. ; NA - Not Analyzed

J - The reported concentration is an estimated value.

D - Result reported from a secondary dilution analysis.

Only Detected Results Reported.

Detection Limits shown are PQL

N:\11173467.0000\ND\Program\EDMS.mde

Printed: 06/24/05 3:40:28 PM

[MATRIX] = SE AND ((LOGDATE) >= 04/09/05 AND (LOGDATE) <= 04/12/05) AND (PRCCODE) NOT LIKE "MET"

TABLE 13c
SUMMARY OF DETECTED SEDIMENT SAMPLE ANALYTICAL RESULTS
COMPARED TO HUMAN HEALTH BIOACCUMULATION
NYSEG - FORMER TRANSIT STREET AND STATE ROAD MGP SITES

Location ID		SED-15	SED-16	SED-17	SED-18	SED-19
Sample ID		S151.5-2.5	SED-16 0-1	SED-17 0-1	SED-18 0-1	SED 19 0-1
Matrix		Sediment	Sediment	Sediment	Sediment	Sediment
Depth Interval (ft)		1.5-2.5	0.0-1.0	0.0-1.0	0.0-1.0	0.0-1.0
Date Sampled		04/10/05	04/09/05	04/09/05	04/09/05	04/11/05
Parameter	Units					
Volatile Organic Compounds						
Benzene	UG/KG	8 U (38.2)	6 U (6.4)	2 J (7.9)	6 U (17.1)	8 U (13.6)
Total BTEX	UG/KG	ND	ND	2	ND	ND
Semivolatile Organic Compounds						
Acenaphthene	UG/KG	1,100 J	270 J	410 U	260 J	510 U
Acenaphthylene	UG/KG	2,900 U	810	290 J	230 J	510 U
Anthracene	UG/KG	1,300 J	870	370 J	870	510 U
Benzo(a)anthracene	UG/KG	2,300 J (82.8)	3,500 (13.8)	1,400 (17.2)	2,200 (37.1)	510 U (29.5)
Benzo(a)pyrene	UG/KG	2,000 J (82.8)	3,500 (13.8)	1,400 (17.2)	1,900 (37.1)	190 J (29.5)
Benzo(b)fluoranthene	UG/KG	1,400 J (82.8)	3,700 (13.8)	1,600 (17.2)	2,700 (37.1)	310 J (29.5)
Benzo(g,h,i)perylene	UG/KG	2,900 U	1,100	490	560	510 U
Benzo(k)fluoranthene	UG/KG	1,800 J (82.8)	1,400 (13.8)	640 (17.2)	770 (37.1)	510 U (29.5)
bis(2-Ethylhexyl)phthalate	UG/KG	2,000 J	350 J	410 U	4,800	270 J
Butylbenzylphthalate	UG/KG	2,900 U	440 U	410 U	400 U	510 U
Carbazole	UG/KG	2,900 U	420 J	410 U	340 J	510 U
Chrysene	UG/KG	2,700 J (82.8)	3,200 (13.8)	1,200 (17.2)	2,000 (37.1)	310 J (29.5)
Dibenz(a,h)anthracene	UG/KG	2,900 U	400 J	410 U	400 U	510 U
Dibenzofuran	UG/KG	2,900 U	150 J	410 U	200 J	510 U
Di-n-butylphthalate	UG/KG	2,900 U	440 U	410 U	390 J	510 U
Di-n-octylphthalate	UG/KG	2,900 U	440 U	410 U	400 U	510 U
Fluoranthene	UG/KG	4,800	4,900	2,200	4,800	580
Fluorene	UG/KG	2,900 U	330 J	160 J	410	510 U
Indeno(1,2,3-cd)pyrene	UG/KG	2,900 U (82.8)	1,100 (13.8)	500 (17.2)	580 (37.1)	510 U (29.5)

Criteria- NYSDEC Technical Guidance for Screening Contaminated Sediments, Human Health Bioaccumulation, January 25, 1999.

(NV) - No Calculable Value, TOC Not Detected

Flags assigned during chemistry validation are shown.

 Concentration Exceeds Criteria.

U - Not detected above the reported quantitation limit. ; NA - Not Analyzed

J - The reported concentration is an estimated value.

D - Result reported from a secondary dilution analysis.

Only Detected Results Reported.

Detection Limits shown are PQL

N:\11173467.0000008\Program\EDMS.mxd

Printed: 08/24/05 3:40:28 PM

[MATRIX] = 'SE' AND ([LOGDATE] >= #04/09/05# AND [LOGDATE] <= #04/12/05#) AND ([PRCODE] NOT LIKE 'MET')

TABLE 13c
SUMMARY OF DETECTED SEDIMENT SAMPLE ANALYTICAL RESULTS
COMPARED TO HUMAN HEALTH BIOACCUMULATION
NYSEG - FORMER TRANSIT STREET AND STATE ROAD MGP SITES

Location ID		SED-15	SED-16	SED-17	SED-18	SED-19
Sample ID		S151.5-2.5	SED-16 0-1	SED-17 0-1	SED-18 0-1	SED 19 0-1
Matrix		Sediment	Sediment	Sediment	Sediment	Sediment
Depth Interval (ft)		1.5-2.5	0.0-1.0	0.0-1.0	0.0-1.0	0.0-1.0
Date Sampled		04/10/05	04/09/05	04/09/05	04/09/05	04/11/05
Parameter	Units					
Semivolatile Organic Compounds						
Naphthalene	UG/KG	2,900 U	160 J	410 U	140 J	510 U
Phenanthrene	UG/KG	6,500	2,400	1,000	2,900	270 J
Pyrene	UG/KG	4,300	4,000	2,000	4,000	440 J
Total Carcinogenic PAHs	UG/KG	10,200	16,800	6,740	10,150	810
Total Non-Carcinogenic PAHs	UG/KG	18,000	14,840	6,510	14,170	1,290
Total Polycyclic Aromatic Hydrocarbons	UG/KG	28,200	31,640	13,250	24,320	2,100
Total Semivolatile Organic Compounds	UG/KG	30,200	32,560	13,250	30,050	2,370
Polychlorinated Biphenyls						
Aroclor 1242	UG/KG	590 U (0.05)	440 U (0.01)	21 U (0.01)	1,000 U (0.02)	26 U (0.02)
Aroclor 1248	UG/KG	8,200 (0.05)	9,200 (0.01)	230 (0.01)	20,000 (0.02)	120 (0.02)
Aroclor 1254	UG/KG	590 U (0.05)	440 U (0.01)	97 (0.01)	11,000 (0.02)	26 U (0.02)
Aroclor 1260	UG/KG	590 U (0.05)	440 U (0.01)	21 U (0.01)	1,000 U (0.02)	26 U (0.02)
Total Polychlorinated Biphenyls	UG/KG	8,200	9,200	327	31,000	120
Miscellaneous Parameters						
Cyanide	MG/KG	1.5 U	1.4	2.6	0.90 U	1.3 U
Total Organic Carbon (TOC)	MG/KG	63,700 J	10,600	13,200	28,500	22,700
Solids, Percent	PERCENT	46.8	76.7	77.0	76.8	58.2

Criteria- NYSDEC Technical Guidance for Screening Contaminated Sediments, Human Health Bioaccumulation, January 25, 1999.

(NV) - No Calculable Value, TOC Not Detected

Flags assigned during chemistry validation are shown.



Concentration Exceeds Criteria.

U - Not detected above the reported quantitation limit ; NA - Not Analyzed

J - The reported concentration is an estimated value.

D - Result reported from a secondary dilution analysis.

Only Detected Results Reported.

Detection Limits shown are PQL

TABLE 13c
SUMMARY OF DETECTED SEDIMENT SAMPLE ANALYTICAL RESULTS
COMPARED TO HUMAN HEALTH BIOACCUMULATION
NYSEG - FORMER TRANSIT STREET AND STATE ROAD MGP SITES

Location ID		SED-19	SED-20	SED-21	SED-22	SED-23
Sample ID		SED DUP 2	S-20 0-0.7	S-21 0-0.7	SED-22 2-3	SED-23 0-1
Matrix		Sediment	Sediment	Sediment	Sediment	Sediment
Depth Interval (ft)		0.0-1.0	0.0-0.7	0.0-0.7	2.0-3.0	0.0-1.0
Date Sampled		04/11/05	04/11/05	04/10/05	04/10/05	04/10/05
Parameter	Units	Field Duplicate (1-1)				
Volatile Organic Compounds						
Benzene	UG/KG	8 U (10.9)	7 U (9.8)	9 U (12.0)	7 U (42.5)	9 U (28.2)
Total BTEX	UG/KG	ND	ND	ND	ND	ND
Semivolatile Organic Compounds						
Acenaphthene	UG/KG	570 U	440 U	670 UJ	4,600 U	290 J
Acenaphthylene	UG/KG	570 U	440 U	670 UJ	4,600 U	330 J
Anthracene	UG/KG	570 U	440 U	670 UJ	4,600 U	840
Benzo(a)anthracene	UG/KG	570 U (23.5)	440 U (21.2)	860 J (26.0)	3,000 J (92.0)	3,000 (61.1)
Benzo(a)pyrene	UG/KG	570 U (23.5)	190 J (21.2)	770 J (26.0)	2,700 J (92.0)	2,800 (61.1)
Benzo(b)fluoranthene	UG/KG	340 J (23.5)	330 J (21.2)	930 J (26.0)	4,000 J (92.0)	4,000 (61.1)
Benzo(g,h,i)perylene	UG/KG	570 U	440 U	520 J	4,600 U	940
Benzo(k)fluoranthene	UG/KG	570 U (23.5)	440 U (21.2)	870 J (26.0)	4,600 U (92.0)	1,600 (61.1)
bis(2-Ethylhexyl)phthalate	UG/KG	360 J	300 J	440 J	9,200	28,000 D
Butylbenzylphthalate	UG/KG	570 U	440 U	670 UJ	4,600 U	1,300
Carbazole	UG/KG	570 U	440 U	670 UJ	4,600 U	310 J
Chrysene	UG/KG	280 J (23.5)	280 J (21.2)	1,600 J (26.0)	2,900 J (92.0)	3,000 (61.1)
Dibenz(a,h)anthracene	UG/KG	570 U	440 U	670 UJ	4,600 U	600 U
Dibenzofuran	UG/KG	570 U	440 U	670 UJ	4,600 U	600 U
Di-n-butylphthalate	UG/KG	570 U	440 U	670 UJ	4,600 U	600 U
Di-n-octylphthalate	UG/KG	66 J	440 U	93 J	4,600 U	2,300
Fluoranthene	UG/KG	530 J	400 J	1,900 J	7,000	5,800
Fluorene	UG/KG	570 U	440 U	670 UJ	4,600 U	380 J
Indeno(1,2,3-cd)pyrene	UG/KG	570 U (23.5)	440 U (21.2)	520 J (26.0)	4,600 U (92.0)	920 (61.1)

Criteria- NYSDEC Technical Guidance for Screening Contaminated Sediments, Human Health Bioaccumulation, January 25, 1999.

(NV) - No Calculable Value, TOC Not Detected

Flags assigned during chemistry validation are shown.

 Concentration Exceeds Criteria.

U - Not detected above the reported quantitation limit. ; NA - Not Analyzed

J - The reported concentration is an estimated value.

D - Result reported from a secondary dilution analysis.

Only Detected Results Reported.

Detection Limits shown are PQL

TABLE 13c
SUMMARY OF DETECTED SEDIMENT SAMPLE ANALYTICAL RESULTS
COMPARED TO HUMAN HEALTH BIOACCUMULATION
NYSEG - FORMER TRANSIT STREET AND STATE ROAD MGP SITES

Location ID		SED-19	SED-20	SED-21	SED-22	SED-23
Sample ID		SED DUP 2	S-20 0-0.7	S-21 0-0.7	SED-22 2-3	SED-23 0-1
Matrix		Sediment	Sediment	Sediment	Sediment	Sediment
Depth Interval (ft)		0.0-1.0	0.0-0.7	0.0-0.7	2.0-3.0	0.0-1.0
Date Sampled		04/11/05	04/11/05	04/10/05	04/10/05	04/10/05
Parameter	Units	Field Duplicate (1-1)				
Semivolatile Organic Compounds						
Naphthalene	UG/KG	570 U	440 U	670 UJ	4,600 U	600 U
Phenanthrene	UG/KG	250 J	140 J	710 J	4,500 J	3,200
Pyrene	UG/KG	410 J	350 J	1,600 J	5,300	4,700
Total Carcinogenic PAHs	UG/KG	620	800	5,550	12,600	15,320
Total Non-Carcinogenic PAHs	UG/KG	1,190	890	4,730	16,800	16,480
Total Polycyclic Aromatic Hydrocarbons	UG/KG	1,810	1,690	10,280	29,400	31,800
Total Semivolatile Organic Compounds	UG/KG	2,236	1,990	10,813	38,600	63,710
Polychlorinated Biphenyls						
Aroclor 1242	UG/KG	28 U (0.01)	23 U (0.01)	84 J (0.02)	220,000 (0.06)	1,500 U (0.04)
Aroclor 1248	UG/KG	85 (0.01)	82 (0.01)	34 UJ (0.02)	12,000 U (0.06)	7,700 (0.04)
Aroclor 1254	UG/KG	28 U (0.01)	32 (0.01)	48 J (0.02)	90,000 (0.06)	6,100 (0.04)
Aroclor 1260	UG/KG	28 U (0.01)	23 U (0.01)	34 UJ (0.02)	12,000 U (0.06)	1,500 U (0.04)
Total Polychlorinated Biphenyls	UG/KG	85	114	132	310,000	13,800
Miscellaneous Parameters						
Cyanide	MG/KG	1.9 U	1.2 U	1.7 U	1.1 U	1.3 U
Total Organic Carbon (TOC)	MG/KG	18,100	16,300	20,000 J	70,800	47,000 J
Solids, Percent	PERCENT	56.7	73.1	47.2	64.0	48.8

Criteria- NYSDEC Technical Guidance for Screening Contaminated Sediments, Human Health Bioaccumulation, January 25, 1999.

(NV) - No Calculable Value, TOC Not Detected

Flags assigned during chemistry validation are shown.

 Concentration Exceeds Criteria.

U - Not detected above the reported quantitation limit ; NA - Not Analyzed

J - The reported concentration is an estimated value.

D - Result reported from a secondary dilution analysis.

Only Detected Results Reported.

Detection Limits shown are PQL

N:\11173467.00000\DB\Program\EDMS.mxd

Printed: 08/24/05 3:40:28 PM

[MATRIX] = 'SE' AND (([LOGDATE]) >= '04/09/05' AND ([LOGDATE]) <= '04/12/05') AND ([PRCODE]) NOT LIKE 'MET'

TABLE 13c
SUMMARY OF DETECTED SEDIMENT SAMPLE ANALYTICAL RESULTS
COMPARED TO HUMAN HEALTH BIOACCUMULATION
NYSEG - FORMER TRANSIT STREET AND STATE ROAD MGP SITES

Location ID		SED-23	SED-23	SED-24	SED-24	SED-25
Sample ID		S231.5-2.5	SED DUP 1	SED-24 0-1	S241.5-2.5	SED 25 0-1
Matrix		Sediment	Sediment	Sediment	Sediment	Sediment
Depth Interval (ft)		1.5-2.5	1.5-2.5	0.0-1.0	1.5-2.5	0.0-1.0
Date Sampled		04/10/05	04/10/05	04/10/05	04/10/05	04/12/05
Parameter	Units		Field Duplicate (1-1)			
Volatile Organic Compounds						
Benzene	UG/KG	7 U (7.7)	7 U (4.8)	7 U (48.5)	6 U (10.5)	6 U (17.7)
Total BTEX	UG/KG	ND	ND	ND	ND	ND
Semivolatile Organic Compounds						
Acenaphthene	UG/KG	420 U	450 U	5,400 U	440 U	480
Acenaphthylene	UG/KG	420 U	450 U	5,400 U	440 U	1,700
Anthracene	UG/KG	420 U	450 U	5,400 U	440 U	1,000
Benzo(a)anthracene	UG/KG	420 U (16.6)	450 U (10.4)	2,900 J (105)	550 (22.8)	3,600 (38.4)
Benzo(a)pyrene	UG/KG	420 U (16.6)	450 U (10.4)	2,800 J (105)	520 (22.8)	3,200 (38.4)
Benzo(b)fluoranthene	UG/KG	420 U (16.6)	450 U (10.4)	3,900 J (105)	820 (22.8)	3,600 (38.4)
Benzo(g,h,i)perylene	UG/KG	420 U	450 U	5,400 U	440 U	960
Benzo(k)fluoranthene	UG/KG	420 U (16.6)	450 U (10.4)	5,400 U (105)	230 J (22.8)	1,200 (38.4)
bis(2-Ethylhexyl)phthalate	UG/KG	420 U	450 U	5,900	6,300	350 J
Butylbenzylphthalate	UG/KG	420 U	450 U	5,400 U	440 U	470 U
Carbazole	UG/KG	420 U	450 U	5,400 U	440 U	470 U
Chrysene	UG/KG	420 U (16.6)	450 U (10.4)	2,800 J (105)	550 (22.8)	3,200 (38.4)
Dibenz(a,h)anthracene	UG/KG	420 U	450 U	5,400 U	440 U	330 J
Dibenzofuran	UG/KG	420 U	450 U	5,400 U	440 U	470 U
Di-n-butylphthalate	UG/KG	420 U	450 U	5,400 U	440 U	470 U
Di-n-octylphthalate	UG/KG	420 U	450 U	660 J	440 U	470 U
Fluoranthene	UG/KG	180 J	450 U	7,300	1,100	8,100 D
Fluorene	UG/KG	420 U	450 U	5,400 U	440 U	600
Indeno(1,2,3-cd)pyrene	UG/KG	420 U (16.6)	450 U (10.4)	5,400 U (105)	440 U (22.8)	840 (38.4)

Criteria- NYSDEC Technical Guidance for Screening Contaminated Sediments, Human Health Bioaccumulation, January 25, 1999.

(NV) - No Calculable Value, TOC Not Detected

Flags assigned during chemistry validation are shown.

 Concentration Exceeds Criteria.

U - Not detected above the reported quantitation limit ; NA - Not Analyzed

J - The reported concentration is an estimated value.

D - Result reported from a secondary dilution analysis.

Only Detected Results Reported.

Detection Limits shown are PQL

N:\11173467.0000\08\Program\EDMS.mds

Printed: 08/24/05 3:40:28 PM

{MATRIX} = 'SE' AND ((LOGDATE) >= '04/09/05' AND (LOGDATE) <= '04/12/05') AND (PROCEDURE) NOT LIKE 'MET'

TABLE 13c
SUMMARY OF DETECTED SEDIMENT SAMPLE ANALYTICAL RESULTS
COMPARED TO HUMAN HEALTH BIOACCUMULATION
NYSEG - FORMER TRANSIT STREET AND STATE ROAD MGP SITES

Location ID		SED-23	SED-23	SED-24	SED-24	SED-25
Sample ID		S231.5-2.5	SED DUP 1	SED-24 0-1	S241.5-2.5	SED 25 0-1
Matrix		Sediment	Sediment	Sediment	Sediment	Sediment
Depth Interval (ft)		1.5-2.5	1.5-2.5	0.0-1.0	1.5-2.5	0.0-1.0
Date Sampled		04/10/05	04/10/05	04/10/05	04/10/05	04/12/05
Parameter	Units		Field Duplicate (1-1)			
Semivolatile Organic Compounds						
Naphthalene	UG/KG	420 U	450 U	5,400 U	440 U	470 U
Phenanthrene	UG/KG	420 U	450 U	5,800	580	1,600
Pyrene	UG/KG	420 U	450 U	5,100 J	850	5,700
Total Carcinogenic PAHs	UG/KG	ND	ND	12,400	2,670	15,970
Total Non-Carcinogenic PAHs	UG/KG	180	ND	18,200	2,530	20,140
Total Polycyclic Aromatic Hydrocarbons	UG/KG	180	ND	30,600	5,200	36,110
Total Semivolatile Organic Compounds	UG/KG	180	ND	37,160	11,500	36,460
Polychlorinated Biphenyls						
Aroclor 1242	UG/KG	21 U (0.01)	23 U (0.01)	14,000 U (0.06)	4,600 (0.01)	120 U (0.02)
Aroclor 1248	UG/KG	44 (0.01)	21 J (0.01)	40,000 (0.06)	220 U (0.01)	860 (0.02)
Aroclor 1254	UG/KG	21 U (0.01)	23 U (0.01)	26,000 (0.06)	900 (0.01)	120 U (0.02)
Aroclor 1260	UG/KG	21 U (0.01)	23 U (0.01)	14,000 U (0.06)	220 U (0.01)	120 U (0.02)
Total Polychlorinated Biphenyls	UG/KG	44	21	66,000	5,500	860
Miscellaneous Parameters						
Cyanide	MG/KG	1.3 U	1.2 U	1.4 U	1.0 U	1.1 U
Total Organic Carbon (TOC)	MG/KG	12,800	8,020	80,900	17,500	29,500
Solids, Percent	PERCENT	74.6	76.4	62.8	80.8	75.8

Criteria- NYSDEC Technical Guidance for Screening Contaminated Sediments, Human Health Bioaccumulation, January 25, 1999.

(NV) - No Calculable Value, TOC Not Detected

Flags assigned during chemistry validation are shown.

 Concentration Exceeds Criteria.

U - Not detected above the reported quantitation limit; NA - Not Analyzed

J - The reported concentration is an estimated value.

D - Result reported from a secondary dilution analysis.

Only Detected Results Reported.

Detection Limits shown are PQL

N:\11173467 0000\06\Program\EDMS.mde

Printed: 08/24/05 3:40:28 PM

[MATRIX] = 'SE' AND ([LOGDATE] >= #04/09/05# AND [LOGDATE] <= #04/12/05#) AND [PRCODE] NOT LIKE 'MET'

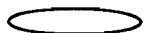
TABLE 13c
SUMMARY OF DETECTED SEDIMENT SAMPLE ANALYTICAL RESULTS
COMPARED TO HUMAN HEALTH BIOACCUMULATION
NYSEG - FORMER TRANSIT STREET AND STATE ROAD MGP SITES

Location ID		SED-26	SED-26	SED-27	SED-28	SED-28
Sample ID		SED 26 0-1	SED 26 3-4	SED-27	SED 28 0-1	SED 28 1-2
Matrix		Sediment	Sediment	Sediment	Sediment	Sediment
Depth Interval (ft)		0.0-1.0	3.0-4.0	-	0.0-1.0	1.0-2.0
Date Sampled		04/12/05	04/12/05	04/09/05	04/12/05	04/12/05
Parameter	Units					
Volatile Organic Compounds						
Benzene	UG/KG	7 U (13.9)	8 U (17.8)	7 U (8.6)	6 U (15.4)	6 U (16.0)
Total BTEX	UG/KG	ND	ND	ND	ND	ND
Semivolatile Organic Compounds						
Acenaphthene	UG/KG	450 U	510 U	530 U	440 U	450 U
Acenaphthylene	UG/KG	450 U	510 U	530 U	440 U	450 U
Anthracene	UG/KG	450 U	510 U	530 U	440 U	450 U
Benzo(a)anthracene	UG/KG	450 U (30.2)	510 U (38.5)	530 U (18.6)	440 U (33.3)	450 U (34.6)
Benzo(a)pyrene	UG/KG	450 U (30.2)	510 U (38.5)	530 U (18.6)	160 J (33.3)	450 U (34.6)
Benzo(b)fluoranthene	UG/KG	450 U (30.2)	510 U (38.5)	530 U (18.6)	300 J (33.3)	450 U (34.6)
Benzo(g,h,i)perylene	UG/KG	450 U	510 U	530 U	440 U	450 U
Benzo(k)fluoranthene	UG/KG	450 U (30.2)	510 U (38.5)	530 U (18.6)	300 J (33.3)	450 U (34.6)
bis(2-Ethylhexyl)phthalate	UG/KG	450 U	230 J	530 U	1,100	280 J
Butylbenzylphthalate	UG/KG	450 U	510 U	530 U	440 U	450 U
Carbazole	UG/KG	450 U	510 U	530 U	440 U	450 U
Chrysene	UG/KG	450 U (30.2)	510 U (38.5)	530 U (18.6)	440 U (33.3)	450 U (34.6)
Dibenz(a,h)anthracene	UG/KG	450 U	510 U	530 U	440 U	450 U
Dibenzofuran	UG/KG	450 U	510 U	530 U	440 U	450 U
Di-n-butylphthalate	UG/KG	450 U	510 U	530 U	440 U	450 U
Di-n-octylphthalate	UG/KG	450 U	56 J	530 U	440 U	450 U
Fluoranthene	UG/KG	450 U	260 J	530 U	330 J	220 J
Fluorene	UG/KG	450 U	510 U	530 U	440 U	450 U
Indeno(1,2,3-cd)pyrene	UG/KG	450 U (30.2)	510 U (38.5)	530 U (18.6)	440 U (33.3)	450 U (34.6)

Criteria- NYSDEC Technical Guidance for Screening Contaminated Sediments, Human Health Bioaccumulation, January 25, 1999.

(NV) - No Calculable Value, TOC Not Detected

Flags assigned during chemistry validation are shown.



Concentration Exceeds Criteria.

U - Not detected above the reported quantitation limit. ; NA - Not Analyzed

J - The reported concentration is an estimated value.

D - Result reported from a secondary dilution analysis.

Only Detected Results Reported.

Detection Limits shown are PQL

N:\11173467\0000008\Program\EDMS.mde

Printed: 08/24/05 3:40:28 PM

[MATRIX] = 'SE' AND ([LOGDATE] >= #04/09/05# AND [LOGDATE] <= #04/12/05#) AND [PRCCODE] NOT LIKE 'MET'

TABLE 13c
SUMMARY OF DETECTED SEDIMENT SAMPLE ANALYTICAL RESULTS
COMPARED TO HUMAN HEALTH BIOACCUMULATION
NYSEG - FORMER TRANSIT STREET AND STATE ROAD MGP SITES

Location ID		SED-26	SED-26	SED-27	SED-28	SED-28
Sample ID		SED 26 0-1	SED 26 3-4	SED-27	SED 28 0-1	SED 28 1-2
Matrix		Sediment	Sediment	Sediment	Sediment	Sediment
Depth Interval (ft)		0.0-1.0	3.0-4.0	-	0.0-1.0	1.0-2.0
Date Sampled		04/12/05	04/12/05	04/09/05	04/12/05	04/12/05
Parameter	Units					
Semivolatile Organic Compounds						
Naphthalene	UG/KG	450 U	510 U	530 U	440 U	450 U
Phenanthrene	UG/KG	450 U	150 J	530 U	130 J	450 U
Pyrene	UG/KG	450 U	220 J	530 U	240 J	170 J
Total Carcinogenic PAHs	UG/KG	ND	ND	ND	760	ND
Total Non-Carcinogenic PAHs	UG/KG	ND	630	ND	700	390
Total Polycyclic Aromatic Hydrocarbons	UG/KG	ND	630	ND	1,460	390
Total Semivolatile Organic Compounds	UG/KG	ND	916	ND	2,560	670
Polychlorinated Biphenyls						
Aroclor 1242	UG/KG	23 U (0.02)	26 U (0.02)	28 U (0.01)	23 U (0.02)	23 U (0.02)
Aroclor 1248	UG/KG	69 (0.02)	360 (0.02)	29 (0.01)	350 (0.02)	480 (0.02)
Aroclor 1254	UG/KG	52 (0.02)	110 (0.02)	29 (0.01)	150 (0.02)	200 (0.02)
Aroclor 1260	UG/KG	23 U (0.02)	26 U (0.02)	18 J (0.01)	23 U (0.02)	23 U (0.02)
Total Polychlorinated Biphenyls	UG/KG	121	470	76	500	680
Miscellaneous Parameters						
Cyanide	MG/KG	1.3 U	1.5 U	0.95 U	1.3 U	1.4 U
Total Organic Carbon (TOC)	MG/KG	23,200	29,600	14,300	25,600	26,600
Solids, Percent	PERCENT	70.2	61.9	52.5	68.5	71.3

Criteria- NYSDEC Technical Guidance for Screening Contaminated Sediments, Human Health Bioaccumulation, January 25, 1999.

(NV) - No Calculable Value, TOC Not Detected

Flags assigned during chemistry validation are shown.



Concentration Exceeds Criteria.

U - Not detected above the reported quantitation limit. ; NA - Not Analyzed

J - The reported concentration is an estimated value.

D - Result reported from a secondary dilution analysis.

Only Detected Results Reported.

Detection Limits shown are PQL

N:\11173467\00000\DENProgram\EDMS.mde
 Printed: 06/24/05 3:40:29 PM

[MATRIX] = 'SE' AND ([LOGDATE] >= 8/4/05/05) AND ([LOGDATE] <= 8/4/12/05) AND ([PRCODE] NOT LIKE 'MET')

TABLE 13c
SUMMARY OF DETECTED SEDIMENT SAMPLE ANALYTICAL RESULTS
COMPARED TO HUMAN HEALTH BIOACCUMULATION
NYSEG - FORMER TRANSIT STREET AND STATE ROAD MGP SITES

Location ID		SED-29	SED-30	SED-30	SED-31	SED-31
Sample ID		SED 29 0.5-1.5	SED 30 0-1	SED 30 1-2	SED 31 0-1	SED 31 1-2
Matrix		Sediment	Sediment	Sediment	Sediment	Sediment
Depth Interval (ft)		0.5-1.5	0.0-1.0	1.0-2.0	0.0-1.0	1.0-2.0
Date Sampled		04/12/05	04/12/05	04/12/05	04/12/05	04/12/05
Parameter	Units					
Volatile Organic Compounds						
Benzene	UG/KG	7 U (16.5)	7 U (15.7)	7 U (14.3)	6 U (16.2)	6 U (14.3)
Total BTEX	UG/KG	ND	ND	ND	ND	ND
Semivolatile Organic Compounds						
Acenaphthene	UG/KG	460 U	450 U	440 U	390 U	440 U
Acenaphthylene	UG/KG	140 J	450 U	440 U	390 U	440 U
Anthracene	UG/KG	310 J	450 U	440 U	390 U	440 U
Benzo(a)anthracene	UG/KG	730 (35.8)	450 U (33.9)	330 J (30.9)	330 J (35.1)	440 U (31.1)
Benzo(a)pyrene	UG/KG	600 (35.8)	450 U (33.9)	250 J (30.9)	310 J (35.1)	190 J (31.1)
Benzo(b)fluoranthene	UG/KG	810 (35.8)	450 U (33.9)	460 (30.9)	570 (35.1)	260 J (31.1)
Benzo(g,h,i)perylene	UG/KG	460 U	450 U	440 U	390 U	440 U
Benzo(k)fluoranthene	UG/KG	460 U (35.8)	450 U (33.9)	460 (30.9)	570 (35.1)	440 U (31.1)
bis(2-Ethylhexyl)phthalate	UG/KG	460 U	450 U	280 J	390 U	440 U
Butylbenzylphthalate	UG/KG	460 U	450 U	440 U	390 U	440 U
Carbazole	UG/KG	460 U	450 U	440 U	390 U	440 U
Chrysene	UG/KG	580 (35.8)	450 U (33.9)	370 J (30.9)	340 J (35.1)	170 J (31.1)
Dibenz(a,h)anthracene	UG/KG	460 U	450 U	440 U	390 U	440 U
Dibenzofuran	UG/KG	460 U	450 U	440 U	390 U	440 U
Di-n-butylphthalate	UG/KG	460 U	450 U	440 U	390 U	440 U
Di-n-octylphthalate	UG/KG	460 U	450 U	440 U	390 U	440 U
Fluoranthene	UG/KG	1,600	450 U	1,000	570	380 J
Fluorene	UG/KG	460 U	450 U	440 U	390 U	440 U
Indeno(1,2,3-cd)pyrene	UG/KG	460 U (35.8)	450 U (33.9)	440 U (30.9)	390 U (35.1)	440 U (31.1)

Criteria- NYSDEC Technical Guidance for Screening Contaminated Sediments, Human Health Bioaccumulation, January 25, 1999.

(NV) - No Calculable Value, TOC Not Detected

Flags assigned during chemistry validation are shown.

 Concentration Exceeds Criteria.

U - Not detected above the reported quantitation limit. ; NA - Not Analyzed

J - The reported concentration is an estimated value.

D - Result reported from a secondary dilution analysis.

Only Detected Results Reported.

Detection Limits shown are PQL

TABLE 13c
SUMMARY OF DETECTED SEDIMENT SAMPLE ANALYTICAL RESULTS
COMPARED TO HUMAN HEALTH BIOACCUMULATION
NYSEG - FORMER TRANSIT STREET AND STATE ROAD MGP SITES

Location ID		SED-29	SED-30	SED-30	SED-31	SED-31
Sample ID		SED 29 0.5-1.5	SED 30 0-1	SED 30 1-2	SED 31 0-1	SED 31 1-2
Matrix		Sediment	Sediment	Sediment	Sediment	Sediment
Depth Interval (ft)		0.5-1.5	0.0-1.0	1.0-2.0	0.0-1.0	1.0-2.0
Date Sampled		04/12/05	04/12/05	04/12/05	04/12/05	04/12/05
Parameter	Units					
Semivolatile Organic Compounds						
Naphthalene	UG/KG	460 U	450 U	440 U	390 U	440 U
Phenanthrene	UG/KG	790	450 U	440 U	210 J	140 J
Pyrene	UG/KG	1,000	450 U	680	400	280 J
Total Carcinogenic PAHs	UG/KG	2,720	ND	1,870	2,120	620
Total Non-Carcinogenic PAHs	UG/KG	3,840	ND	1,680	1,180	800
Total Polycyclic Aromatic Hydrocarbons	UG/KG	6,560	ND	3,550	3,300	1,420
Total Semivolatile Organic Compounds	UG/KG	6,560	ND	3,830	3,300	1,420
Polychlorinated Biphenyls						
Aroclor 1242	UG/KG	24 U (0.02)	23 U (0.02)	46 U (0.02)	190 U (0.02)	22 U (0.02)
Aroclor 1248	UG/KG	400 (0.02)	410 (0.02)	640 (0.02)	980 (0.02)	270 (0.02)
Aroclor 1254	UG/KG	170 (0.02)	23 U (0.02)	46 U (0.02)	1,300 (0.02)	120 (0.02)
Aroclor 1260	UG/KG	24 U (0.02)	23 U (0.02)	46 U (0.02)	190 U (0.02)	22 U (0.02)
Total Polychlorinated Biphenyls	UG/KG	570	410	640	2,280	390
Miscellaneous Parameters						
Cyanide	MG/KG	1.4 U	1.1 U	1.3 U	1.2 U	1.3 U
Total Organic Carbon (TOC)	MG/KG	27,500	26,100	23,800	27,000	23,900
Solids, Percent	PERCENT	71.6	71.0	68.4	77.1	78.6

Criteria- NYSDEC Technical Guidance for Screening Contaminated Sediments, Human Health Bioaccumulation, January 25, 1999.

(NV) - No Calculable Value, TOC Not Detected

Flags assigned during chemistry validation are shown.

 Concentration Exceeds Criteria.

U - Not detected above the reported quantitation limit. ; NA - Not Analyzed

J - The reported concentration is an estimated value.

D - Result reported from a secondary dilution analysis.

Only Detected Results Reported.

Detection Limits shown are PQL

N:\11173467.000006\Program\EDMS.mde

Printed: 08/24/05 3:40:29 PM

[MATRIX] = SE AND ([LOGDATE] >= #04/09/05# AND [LOGDATE] <= #04/12/05#) AND [PRCODE] NOT LIKE "MET"

TABLE 13c
SUMMARY OF DETECTED SEDIMENT SAMPLE ANALYTICAL RESULTS
COMPARED TO HUMAN HEALTH BIOACCUMULATION
NYSEG - FORMER TRANSIT STREET AND STATE ROAD MGP SITES

Location ID		SED-32	SED-32	SED-33	SED-34	SED-35
Sample ID		SED 32 0-1	SED 32 4-4.8	SED 33 0-1	SED 34 0-1	SED 35 0-1
Matrix		Sediment	Sediment	Sediment	Sediment	Sediment
Depth Interval (ft)		0.0-1.0	4.0-4.8	0.0-1.0	0.0-1.0	0.0-1.0
Date Sampled		04/12/05	04/12/05	04/12/05	04/12/05	04/12/05
Parameter	Units					
Volatile Organic Compounds						
Benzene	UG/KG	7 U (19.6)	8 U (17.8)	9 U (13.3)	7 U (9.3)	7 U (10.4)
Total BTEX	UG/KG	ND	ND	ND	ND	ND
Semivolatile Organic Compounds						
Acenaphthene	UG/KG	450 U	510 U	620 U	470 U	490 U
Acenaphthylene	UG/KG	450 U	510 U	620 U	470 U	490 U
Anthracene	UG/KG	450 U	510 U	620 U	470 U	490 U
Benzo(a)anthracene	UG/KG	450 U (42.5)	570 (38.6)	620 U (28.7)	470 U (20.2)	490 U (22.6)
Benzo(a)pyrene	UG/KG	220 J (42.5)	570 (38.6)	620 U (28.7)	470 U (20.2)	180 J (22.6)
Benzo(b)fluoranthene	UG/KG	310 J (42.5)	670 (38.6)	620 U (28.7)	470 U (20.2)	250 J (22.6)
Benzo(g,h,i)perylene	UG/KG	450 U	510 U	620 U	470 U	490 U
Benzo(k)fluoranthene	UG/KG	450 U (42.5)	510 U (38.6)	620 U (28.7)	470 U (20.2)	490 U (22.6)
bis(2-Ethylhexyl)phthalate	UG/KG	290 J	510 U	620 U	470 U	490 U
Butylbenzylphthalate	UG/KG	450 U	510 U	620 U	470 U	490 U
Carbazole	UG/KG	450 U	510 U	620 U	470 U	490 U
Chrysene	UG/KG	210 J (42.5)	470 J (38.6)	620 U (28.7)	470 U (20.2)	180 J (22.6)
Dibenz(a,h)anthracene	UG/KG	450 U	510 U	620 U	470 U	490 U
Dibenzofuran	UG/KG	450 U	510 U	620 U	470 U	490 U
Di-n-butylphthalate	UG/KG	450 U	510 U	620 U	470 U	490 U
Di-n-octylphthalate	UG/KG	450 U	510 U	620 U	470 U	490 U
Fluoranthene	UG/KG	350 J	1,100	620 U	470 U	430 J
Fluorene	UG/KG	450 U	510 U	620 U	470 U	490 U
Indeno(1,2,3-cd)pyrene	UG/KG	450 U (42.5)	510 U (38.6)	620 U (28.7)	470 U (20.2)	490 U (22.6)

Criteria- NYSDEC Technical Guidance for Screening Contaminated Sediments, Human Health Bioaccumulation, January 25, 1999.

(NV) - No Calculable Value, TOC Not Detected

Flags assigned during chemistry validation are shown.

 Concentration Exceeds Criteria.

U - Not detected above the reported quantitation limit. ; NA - Not Analyzed

J - The reported concentration is an estimated value.

D - Result reported from a secondary dilution analysis.

Only Detected Results Reported.

Detection Limits shown are PQL

N:\1173467_0000\09\Program\EDMS.mde

Printed: 06/24/05 3:40:29 PM

[MATRIX] = SE AND ([LOGDATE] >= #04/08/05# AND [LOGDATE] <= #04/12/05#) AND ([PRICCODE] NOT LIKE "MET")

TABLE 13c
SUMMARY OF DETECTED SEDIMENT SAMPLE ANALYTICAL RESULTS
COMPARED TO HUMAN HEALTH BIOACCUMULATION
NYSEG - FORMER TRANSIT STREET AND STATE ROAD MGP SITES

Location ID		SED-32	SED-32	SED-33	SED-34	SED-35
Sample ID		SED 32 0-1	SED 32 4-4.8	SED 33 0-1	SED 34 0-1	SED 35 0-1
Matrix		Sediment	Sediment	Sediment	Sediment	Sediment
Depth Interval (ft)		0.0-1.0	4.0-4.8	0.0-1.0	0.0-1.0	0.0-1.0
Date Sampled		04/12/05	04/12/05	04/12/05	04/12/05	04/12/05
Parameter	Units					
Semivolatile Organic Compounds						
Naphthalene	UG/KG	450 U	510 U	620 U	470 U	490 U
Phenanthrene	UG/KG	140 J	320 J	620 U	470 U	200 J
Pyrene	UG/KG	270 J	860	620 U	470 U	340 J
Total Carcinogenic PAHs	UG/KG	740	2,280	ND	ND	610
Total Non-Carcinogenic PAHs	UG/KG	760	2,280	ND	ND	970
Total Polycyclic Aromatic Hydrocarbons	UG/KG	1,500	4,560	ND	ND	1,580
Total Semivolatile Organic Compounds	UG/KG	1,790	4,560	ND	ND	1,580
Polychlorinated Biphenyls						
Aroclor 1242	UG/KG	110 U (0.03)	26 U (0.02)	31 U (0.02)	23 U (0.01)	25 U (0.01)
Aroclor 1248	UG/KG	660 (0.03)	38 (0.02)	24 J (0.02)	160 (0.01)	43 (0.01)
Aroclor 1254	UG/KG	410 (0.03)	62 (0.02)	31 U (0.02)	79 (0.01)	29 (0.01)
Aroclor 1260	UG/KG	110 U (0.03)	26 U (0.02)	31 U (0.02)	23 U (0.01)	25 U (0.01)
Total Polychlorinated Biphenyls	UG/KG	1,070	100	24	239	72
Miscellaneous Parameters						
Cyanide	MG/KG	1.2 U	1.6 U	1.8 U	1.3 U	1.6 U
Total Organic Carbon (TOC)	MG/KG	32,700	29,700	22,100	15,500	17,400
Solids, Percent	PERCENT	68.8	65.6	50.3	71.6	64.8

Criteria- NYSDEC Technical Guidance for Screening Contaminated Sediments, Human Health Bioaccumulation, January 25, 1999.

(NV) - No Calculable Value, TOC Not Detected

Flags assigned during chemistry validation are shown.



Concentration Exceeds Criteria.

U - Not detected above the reported quantitation limit. ; NA - Not Analyzed

J - The reported concentration is an estimated value.

D - Result reported from a secondary dilution analysis.

Only Detected Results Reported.

Detection Limits shown are PQL

N:\1173457.00000.DB\Prgram\EDMS.mde

Printed: 08/24/05 3:40:29 PM

[MATRIX] = 'SE' AND ((LOGDATE) >= '04/09/05' AND (LOGDATE) <= '04/12/05') AND (PRCCODE) NOT LIKE 'MET'

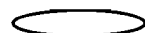
TABLE 13c
SUMMARY OF DETECTED SEDIMENT SAMPLE ANALYTICAL RESULTS
COMPARED TO HUMAN HEALTH BIOACCUMULATION
NYSEG - FORMER TRANSIT STREET AND STATE ROAD MGP SITES

Location ID		SED-36
Sample ID		SED 36 0-1
Matrix		Sediment
Depth Interval (ft)		0.0-1.0
Date Sampled		04/12/05
Parameter	Units	
Volatile Organic Compounds		
Benzene	UG/KG	10 U (15.6)
Total BTEX	UG/KG	ND
Semivolatile Organic Compounds		
Acenaphthene	UG/KG	630 U
Acenaphthylene	UG/KG	630 U
Anthracene	UG/KG	630 U
Benzo(a)anthracene	UG/KG	630 U (33.8)
Benzo(a)pyrene	UG/KG	630 U (33.8)
Benzo(b)fluoranthene	UG/KG	630 U (33.8)
Benzo(g,h,i)perylene	UG/KG	630 U
Benzo(k)fluoranthene	UG/KG	630 U (33.8)
bis(2-Ethylhexyl)phthalate	UG/KG	630 U
Butylbenzylphthalate	UG/KG	630 U
Carbazole	UG/KG	630 U
Chrysene	UG/KG	630 U (33.8)
Dibenz(a,h)anthracene	UG/KG	630 U
Dibenzofuran	UG/KG	630 U
Di-n-butylphthalate	UG/KG	630 U
Di-n-octylphthalate	UG/KG	630 U
Fluoranthene	UG/KG	630 U
Fluorene	UG/KG	630 U
Indeno(1,2,3-cd)pyrene	UG/KG	630 U (33.8)

Criteria- NYSDEC Technical Guidance for Screening Contaminated Sediments, Human Health Bioaccumulation, January 25, 1999.

(NV) - No Calculable Value, TOC Not Detected

Flags assigned during chemistry validation are shown.



Concentration Exceeds Criteria.

U - Not detected above the reported quantitation limit. ; NA - Not Analyzed

J - The reported concentration is an estimated value.

D - Result reported from a secondary dilution analysis.

Only Detected Results Reported.

Detection Limits shown are PQL

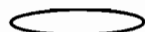
TABLE 13c
SUMMARY OF DETECTED SEDIMENT SAMPLE ANALYTICAL RESULTS
COMPARED TO HUMAN HEALTH BIOACCUMULATION
NYSEG - FORMER TRANSIT STREET AND STATE ROAD MGP SITES

Location ID		SED-36
Sample ID		SED 36 0-1
Matrix		Sediment
Depth Interval (ft)		0.0-1.0
Date Sampled		04/12/05
Parameter	Units	
Semivolatile Organic Compounds		
Naphthalene	UG/KG	630 U
Phenanthrene	UG/KG	630 U
Pyrene	UG/KG	630 U
Total Carcinogenic PAHs	UG/KG	ND
Total Non-Carcinogenic PAHs	UG/KG	ND
Total Polycyclic Aromatic Hydrocarbons	UG/KG	ND
Total Semivolatile Organic Compounds	UG/KG	ND
Polychlorinated Biphenyls		
Aroclor 1242	UG/KG	32 U (0.02)
Aroclor 1248	UG/KG	17 J (0.02)
Aroclor 1254	UG/KG	32 U (0.02)
Aroclor 1260	UG/KG	32 U (0.02)
Total Polychlorinated Biphenyls	UG/KG	17
Miscellaneous Parameters		
Cyanide	MG/KG	1.6 U
Total Organic Carbon (TOC)	MG/KG	26,000
Solids, Percent	PERCENT	50.0

Criteria- NYSDEC Technical Guidance for Screening Contaminated Sediments, Human Health Bioaccumulation, January 25, 1999.

(NV) - No Calculable Value, TOC Not Detected

Flags assigned during chemistry validation are shown.



Concentration Exceeds Criteria.

U - Not detected above the reported quantitation limit. ; NA - Not Analyzed

J - The reported concentration is an estimated value.

D - Result reported from a secondary dilution analysis.

Only Detected Results Reported.

Detection Limits shown are PQL