



Niagara Nature News
 An Environmental Publication by Niagara County
 Soil & Water Conservation District
SUMMER 2012 - ENEWS

Niagara County Soil & Water
 Conservation District
 4487 Lake Avenue
 Lockport, New York 14094
 Phone: (716) 434-4949
 Fax: (716) 433-1070
 www.niagaraswcd.com



District Directors

David C. Wilson
Chairman

James Bittner
Vice Chairman

Barry Butski
Treasurer

Mary Gumaer
Member

Richard Lang
Member

David Godfrey
Legislator

John Syracuse
Legislator

District Staff

Mark J. Seider, P.E.
District Engineer
 mark.seider@ny.nacdnet.net

Darcy Rae Tone
*District Secretary/Education
 Program Administrator*
 darcy.tone@ny.nacdnet.net

Victor F. DiGiacomo, Jr.
Remedial Action Plan Coordinator
 victor.digiacom@ny.nacdnet.net

Gregory Briggs
Natural Resource Laborer
 gregory.briggs@ny.nacdnet.net

USDA NRCS

Charles Kesterson
Soil Conservationist
 charles.kesterson@ny.usda.gov
 (716) 434-4949 Ext. 110

EPA ADDS EIGHTEENMILE CREEK TO NATIONAL PRIORITIES LIST (FEDERAL SUPERFUND)

On March 15, 2012, the U.S. Environmental Protection Agency announced it had added the Eighteen Mile Creek site in Niagara County, New York to the Superfund National Priorities List of the country's most hazardous waste sites. Sediment in some areas of the creek is contaminated with harmful chemicals, including polychlorinated biphenyls (PCBs), heavy metals and dioxin, which can have serious effects on people's health, wildlife and the environment.

"Contamination in the Eighteen Mile Creek is dangerous to the health of people who eat fish from the creek and to the environment," said Judith A. Enck, EPA Regional Administrator. "Adding the Eighteen Mile Creek site to the Superfund list will allow the EPA to do the extensive sampling needed to find the best ways to address the contamination and protect people's health."

The New York State Department of Environmental Conservation, in consultation with EPA, previously investigated four former industrial areas in Lockport, New York, known collectively as the Eighteen Mile Creek Corridor site. The site covers the Flintkote Plant site, United Paperboard Company, Upson Park and the White Transportation property. NYSDEC identified six additional areas within the Eighteen Mile Creek watershed where cleanup activities are also needed. The earlier investigations and sampling of sediment in and around Eighteen Mile Creek confirmed the presence of PCBs, mercury, lead, copper, pesticides and dioxin throughout most of the creek. Specific sources of the contamination have not been definitively identified. EPA's further investigation into the nature and extent of the contamination in and around Eighteen Mile Creek is expected to begin this summer.

Nationwide, EPA is proposing to add 10 other sites to the Superfund list and has designated nine others as final on the list. The EPA periodically proposes sites to the Superfund list and, after responding to public comments, designates them as final Superfund sites. The Superfund final designation makes them eligible for funds to conduct long-term cleanups. The Eighteen Mile Creek site is now designated as final on the Superfund list.

The EPA performs extensive searches to identify and locate the parties potentially responsible for the contamination at all sites on the Superfund list. The agency requires responsible parties to pay for or perform the cleanup work with EPA oversight. The majority of Superfund cleanups are performed by or paid for by polluters. Taxpayer dollars are used to cover EPA cleanup costs when no responsible party can be identified.

For more information, visit: <http://www.epa.gov/region2/superfund/npl/18milecreek>.

Inside this issue:	Page
Local Envirothon Winners	2
Great Lakes Board	2
Fish Order Form	3
Fish Facts	4
The Green Menace	5



NCTC COMPETES AT STATE ENVIROTHON



2012 Niagara County Envirothon Winners

T: Zach Bice, Mr. Paul Dewey, Nathan Fiedler
B: Alisha Raymond, Jenna Weirich, Caitlin Reilly

Five students from Niagara Career and Technology Center joined hundreds of high school students this past month at Hobart & William Colleges in Geneva to participate in the 2012 New York State Envirothon. Team members Alisha Raymond, Jenna Weirich, Caitlin Reilly, Zach Bice and Nathan Fiedler recently won the Niagara-Orleans Regional Envirothon competition held at Bond Lake Nature Complex. They traveled with their advisor, Paul Dewey, to compete at the state level for scholarships and the opportunity to represent New York at the international 2012 Canon Envirothon this summer at Susquehanna University in

Selinsgrove, PA. Other participating teams were from Royalton-Hartland, Lyndonville and Kendall.

Sponsored by New York Power Authority for over twenty years, other local supporters included M&T Bank, Newroyal Orchards, Albion Sports and Graphics, and Orleans Poverty Hill Farm.

Envirothon is a series of hands-on contests in which teams of four to five students compete to solve environmental problems in five subject areas including aquatics, forestry, soils, wildlife and a current issue. Each team is also required to give an oral presentation based on the current issue, which this year was "Low Impact

Development (LID)".

The Soil & Water Conservation Districts of Niagara and Orleans Counties jointly coordinate the Regional Envirothon to incorporate environmental studies into the school curriculum and expose students to career options in conservation. Beyond motivating students to learn more about the environment, the Envirothon emphasizes development of practical skills such as research, teamwork and public speaking. Held throughout the U.S. and Canada, the program reaches more than 500,000 students every year. To learn more about the Envirothon visit www.nysenvirothon.net or call #716-434-4949.

FYI...

The District has a No-Till drill available for your next conservation seeding project.

\$50 delivery charge and \$15/acre rental fee

We provide drill delivery and cleaning. Customer provides own seed.

(716) 434-4949 Ext. 4



Niagara County Submittal to the 2012 Arbor Day Poster Contest

Suhana Monsalve - Lew-Port

EPA FORMS FIRST ADVISORY BOARD FOR GREAT LAKES

CHICAGO, IL. - The U.S. Environmental Protection Agency announced the creation of an advisory board to support federal agencies with the implementation of the Great Lakes Restoration Initiative (GLRI) and the updated Great Lakes Water Quality Agreement.

The new board, the federal government's first advisory committee on Great Lakes issues, will provide advice and recommendations to EPA Administrator Lisa P. Jackson in her capacity as federal Interagency Task Force chair. EPA will consider candidates from a broad range of interests including

environmental groups, businesses, agricultural groups, funders/foundations, environmental justice groups, youth groups, academia and state, local and tribal representatives as needed. Nominations will be solicited through a second Federal Register notice in the coming weeks. EPA anticipates that board will be established this summer.

The Interagency Task Force is made up of 16 federal agencies and departments. In 2010 they developed an action plan to implement the president's historic initiative.

It calls for aggressive efforts in five areas:

- Cleaning up toxics and toxic hot spot Areas of Concern.
- Combating invasive species.
- Promoting near-shore health by protecting watersheds from polluted runoff.
- Restoring wetlands and other habitats.
- Raising public awareness & tracking progress.

The plan also establishes annual benchmarks for success and progress. For more on the GLRI, see www.glri.us.

To view a copy of the Federal Register notice announcing EPA's intent to establish the advisory board, see <https://www.federalregister.gov/articles/2012/05/31/2012->

The Niagara County Soil & Water Conservation District is a local government subdivision under New York State law. The District was established as a public benefit by the County of Niagara in 1954. Your support of our programs aid in the District's conservation efforts to protect natural resources and water quality for our residents. In these wavering economic times, we thank you for your continued assistance in fulfilling our goals.

2012 POND STOCKING AND GRASS CARP PROGRAMS

Pond Stocking

General Information: Stocking rates usually are 50-100 bass and 500-600 minnows per surface area. If your pond is relatively new, be sure there is vegetation for reproductive habitat and aquatic life for a food chain. Recommended time to establish a pond before stocking is one year. You **MUST** obtain a stocking permit from the DEC prior to pickup. Applications are available in our office.

Triploid Grass Carp for Aquatic Weed Control

General Information: The average size of the carp will be 10+". Stock grass carp only in ponds which have been properly protected so they are unable to escape through inlets or outlets into other NYS waters. You **MUST** obtain a stocking permit from NYS DEC before submitting an order. All 3 copies of the permit must accompany your order and a completed copy will be returned to you at pickup.

Order By: Friday, August 17, 2012

Pick Up: Thursday, September 13th - 10AM SHARP

We are trying something new this year --- same supplier, same day for both pond stocking and grass carp! Pickup will be at the SWCD office located at the north side of the Cooperative Extension Administration Building on the County Fairgrounds, Route 78, Lockport. All orders will be pre-counted and in aerated bags for your convenience. Bring a box or cooler in which to stabilize the bags for transport to your pond. **NO POND WATER NEEDED!** Transferring the fish to your pond immediately is of utmost importance due to oxygen needs. Hatchery personnel will only be here 1/2 hour to complete delivery so **PLEASE BE PROMPT!**

Payment Information: Submit payment by check or money order with the bottom portion of this form, payable to Niagara County SWCD. Keep the top portion as your delivery date reminder.

2012 Pond Stocking Program			
Type of Fish	Cost	# of Fish	\$ Amount
Largemouth Bass 2"- 4"	25 / \$54		
Perch 1-2"	25 / \$38		
Sunfish 1-2"	25 / \$34		
Channel Catfish 4"- 6"	12 / \$32		
Fathead Minnows 1"	100 / \$20		
Golden Shiners 2-3"	50 / \$26		
Koi (asst. colors) 4"	4 / \$32		
Grass Carp 10+"	\$21 each		
		Subtotal	
(NYS sales tax included as required)		+ Delivery	\$4.00
		Total Due	
Name: _____			
Address: _____			
City: _____ State: _____ Zip: _____			
Daytime Phone: _____			
<p>Mail to: Niagara County SWCD 4487 Lake Ave. Lockport NY 14094</p> <p>If ordering Grass Carp include ALL 3 ORIGINAL COPIES of your DEC permit. You will receive a completed copy at pickup.</p>			

FISH FACTS

The following are brief descriptions of the fish we offer. Order forms are included in this newsletter on page # 3.

Largemouth Bass – Found throughout NYS, they are considered one of the state's most important sport fish. These members of the Sunfish Family (Centrarchidae) prefer weedy, rocky areas to provide both protection and food supply. Usually weighing 3-5 lbs, they can get over 10 lbs and 2 feet in length. They are carnivorous; which means they'll eat small fish, crayfish, frogs, snakes, and some small mammals and birds if given the opportunity.

Channel Catfish - Catfishes are characterized by scaleless skin and barbels, better known as whiskers, about their mouth. Channel catfish have a deeply forked tail and dark spots. The spotting, however, diminishes with age. Consequently, older channel cats are frequently mistaken as blue catfish. But the anal fin on blue cats has a flat outer edge and channels have a rounded edge. They can grow to be 4 ft long and weigh up to 58lbs.

Fathead Minnows – Fathead minnows are small in size, averaging two to three inches in length. They are sturdy, heavy bodied fish with small mouths and a lateral line that stops under the dorsal fin. They are generally dull in color, with dark bodies and a slight brass tint on the sides. With the exception of Long Island, fathead minnows are found in waters across New York State. They prefer ponds and slow moving water in streams. They can tolerate muddy water, and are occasionally found in roadside ditches. In addition, fathead minnows can tolerate water with salt in it.

Golden Shiners - The golden shiner can be found throughout most of the US. These fish can be found in large schools around submerged structures where they primarily feed on zooplankton. The golden shiner spawns several times throughout spring and summer. Spawning can be aided with the use of structures such as sunken evergreens or stacked pallets. The abundant reproduction of this fish makes it an excellent choice for stocking where predatory species are present. These fish are slightly larger than fathead minnows and are preferred by large predators.

Triploid Grass Carp – The grass carp (*Ctenopharyngodon idella*) is one of the largest members of the minnow family, commonly reaching weights in excess of 25 lbs. They can live up to 10 years. Native to Asia, this carp lacks the barbells and spiny dorsal and anal fin rays characteristic of its North American relatives, bearing a closer resemblance to a large creek chub. It is called "triploid" since it has been bred to retain an extra chromosome, rendering it sterile. Grass carp feed strictly by grazing on aquatic vegetation and are effectively used as aquatic plant control agents in over 50 countries.

Perch - The true perch of New York State include some of the best tasting and most popular freshwater fishes. As a family, they are widely distributed, adaptable to a wide range of habitats, and fun to catch on rod and reel. In addition, the less known members of the perch family, the darters, are probably the most colorful freshwater fish in North America. True perch are spiny-rayed fish which have one or more sharp spines on their fins. While they are quite variable in appearance, they all are slender in body shape, have two dorsal (back) fins, and one anal fin. True perch can be separated into two groups: larger perches and smaller perches.

Sunfish - Sunfish are small- to medium-sized fish with a single anal (bottom rear fin) and a two-part dorsal (back) fin. They are spiny-rayed, with one or more sharp spines found on their dorsal, pelvic (bottom front) and anal fins. These spines help protect adult fish from being eaten by larger fish and can prick the fingers of any angler who is not careful when removing the hook.

Koi - Koi are descendants of the minnow family. They have been selectively bred for more than 1000 years to produce the brilliant colorations that we have today. The Japanese cherish these fish for their colors and longevity. Koi are great at eating filamentous algae and some submerged plants making them a great compliment to grass carp. Koi become almost "dog tame" and will feed from your hand with minimal training. Larger koi live well with large mouth bass and other game fish.

2011 ANNUAL REPORT OF ACCOMPLISHMENTS

- Trees Sold - 46,140 to 634 customers
- Ag Value Assessments - 150 assessments for 90 farms - total of 8,325 acres
- Ponds Stocked - 1,542 fish to 12 ponds
- Grass Carp - 91 carp to 21 ponds
- Pond Site Evaluations - 8
- Technical Assistance Request - 166
- Resource Map Requests - 21
- Environmental Field Days - 358 students
- Regional Envirothon - 8 teams
- Newsletters - 4,300 mailed twice a year
- Stream/Shore Stabilization - 2
- Stormwater assistance - 7 communities
- Tile Drainage/ditching - 107,000 ft.
- Grassland Management - 50 acres
- Wildlife Habitat Projects - 1
- Silage Leachate Systems - 2
- Ag Waste Mixing Facilities - 1
- Ag Waste Storage Facilities - 1
- Ag Compost Facilities - 2
- Barnyard Runoff Mgmt Systems - 8

USDA/NRCS PROGRAMS

- WHIP practices - 1
- WRPs underway - 5
- Wetland restorations - 4 acres
- EQIP completed - 1
- EQIP practices - 7
- EQIP - new applications - 15
- AMA - new applications - 3



DON'T FORGET YOUR COVER CROPS

Cover Crops have been receiving a lot of attention these days among our high producers. The main reason is that they play an important part in retaining nutrients within the plow layer, primarily nitrogen. Other proven conservation benefits are reduced erosion, improved water quality, air and water movement through the soil profile. Cover crops can provide extended early spring and late fall forage alternatives for our grazers; helps suppress weeds, and provide a wildlife benefit. For further information please contact USDA, NRCS. <http://www.nrcs.usda.gov>



EMERALD ASH BORER HAS REACHED NIAGARA COUNTY

A large colony of emerald ash borers (EAB) has been discovered in Niagara County. This "Green Menace" is presently affecting at least one wooded area at Niagara Falls Country Club in Lewiston, NY.

The Emerald Ash Borer, which has decimated the Ash tree population in the Great Lakes region throughout the past few years, has developed a rather large colony in a group of trees along one of the fairways of the Country Club.

The insect, first confirmed in New York State in June 2009, has resulted in the death or removal of countless ash trees which have resulted in hundreds of millions of dollars being spent at the federal, state and local levels to handle present colonies and prevent future infestations.

New York State Department of Environmental Conservation investigated the property, and found a large population of Emerald Ash Borer in some of the trees, and has suggested that the trees be removed and properly handled to assure EAB removal from the site.

The Emerald Ash Borer (EAB) is an invasive wood-boring beetle. Its native range is eastern Russia, northern China, Mongolia, Korea, Japan and Taiwan. The beetle's first North American populations were confirmed in the summer of 2002 in southeast Michigan and Ontario. Judging by the size of the infestations and the stage of damage to the infested trees, the beetle was likely introduced to the area in the early 1990's. It is believed that the beetle was introduced into North America in ash wood used for shipping pallets and packing materials in cargo ships or shipping containers.

Firewood Movement Ban

In order to slow the spread of EAB and other damaging forest pests, NYS instituted a state-wide ban on firewood movement. Firewood cannot be moved more than 50 miles. Homeowners and campers should purchase and burn firewood harvested from forests within 50 miles of their home or camp. Complete details about the ban on firewood movement, see the NYS DEC web site

<http://www.dec.ny.gov/animals/28722.html>.

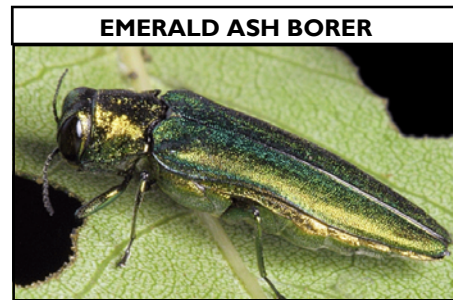
HELP SLOW THE SPREAD OF EAB

- Don't move firewood - don't give EAB & others a free ride.
- Collect Ash Tree Seed - for future generations
- Serve on a Community Preparedness Planning Committee - www.nsl.fs.fed.us/geneticconservation_ash.html
- Educate yourself - <http://www.nyis.info/eab>
- Report suspicious sightings - www.beetledetectives.com

NYSDEC EAB Page: <http://www.dec.ny.gov/animals/7253.html>

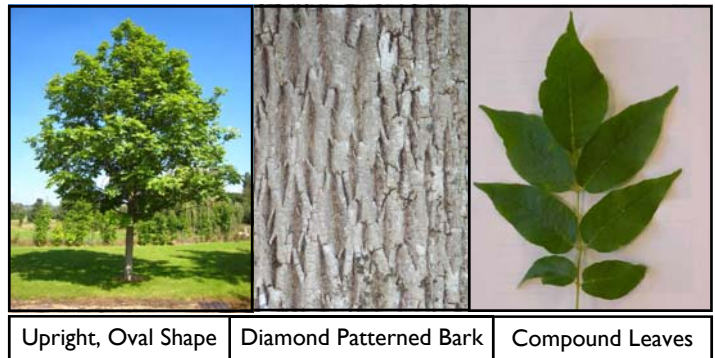
Participate:

Join up with the Western NY EAB Task Force at, http://www.nyis.info/index.php?action=eab_taskforce_established



EMERALD ASH BORER

ASH TREE IDENTIFICATION



Upright, Oval Shape

Diamond Patterned Bark

Compound Leaves

**SPACE AVAILABLE FOR YOUR
ADVERTISEMENT !**

**FOR MORE INFORMATION AND PRICING
CALL, (716) 434-4949 EXT. 4**



AquaTech Environmental, Inc.

Pond and Lake Management

*WNY's Only Full Service Pond and Lake
Management Firm*

FREE ESTIMATES

Services Include:

- Aquatic Plant and Algae Control - Fish Stocking and Management
- Water Quality Testing/Improvement - Aeration/Fountain Installation
- Bathymetric Mapping - Design Consultation

1/4 Acre and Larger Ponds Only Please

Phone: 716-824-6155 - Email: dadrian@me.com

WEB - www.pondandlakehelp.com

Non-Discrimination Statement

"The U.S. Department of Agriculture (USDA) prohibits discrimination in all its programs and activities on the basis of race, color, national origin, age, disability, and where applicable, sex, marital status, familial status, parental status, religion, sexual orientation, genetic information, political beliefs, reprisal, or because all or part of an individual's income is derived from any public assistance program. (Not all prohibited bases apply to all programs.) Persons with disabilities who require alternative means for communication of program information (Braille, large print, audiotape, etc.) should contact USDA's TARGET Center at (202) 720-2600 (voice and TDD). To file a complaint of discrimination write to USDA, Director, Office of Civil Rights, 1400 Independence Avenue, S.W., Washington, D.C. 20250-9410 or call (800) 795-3272 (voice) or (202) 720-6382 (TDD). USDA is an equal opportunity employer."



RETURN SERVICE REQUESTED

NON-PROFIT
U.S. POSTAGE
PAID
LOCKPORT, NY
PERMIT No. 510

**Niagara County Soil & Water
Conservation District**
4487 Lake Avenue
Lockport, New York 14094
Phone: (716) 434-4949
Fax: (716) 433-1070
www.niagaraswcd.com


DRAIN TILE
CULVERT PIPE

MAWHINEY
TRENCHING AND TRUCKING INC.
SPECIALIZING IN UNDERGROUND DRAINAGE
LASER CONTROLLED MACHINE

5082 UPPER MOUNTAIN RD.
LOCKPORT, NEW YORK 14094

BACKHOE SERVICE
DUMP TRUCK SERVICE

DOUGLAS MAWHINEY
PHONE (716) 434-7536

 **Bruce Muck**
AUCTIONEER

"Let's talk your treasures into tender"

Farm
Home
Business Liquidations

3490 Rt. 425
Wilson, NY 14172
(716) 751-9835

COUNTRY ESTATES MOBILE VILLAGE, INC.
Looking for a mobile home lot or to rent a mobile home?

James B. Preston
Owner/Operator
E-mail: cemvinc@toast.net

2297 Hartland Road
Gasport, NY 14067-9439

Phone: (716) 795-9106
Fax: (716) 795-9106

 **NIAGARA FRONTIER**
EQUIPMENT SALES INC.


Call Karl: **716-622-7041**

4060 Lake Ave (Rte 78N) Lockport
40+ Years of Professional Service
NFESales.com - Sales@NFESales.com

Sales-Service
Parts-Rentals

Office: 716-434-2000



 **MOLEY ELECTRIC MOTOR REPAIR**
4573 Shadigee Road
Newfane, New York 14108

John Moley (716)751-9281

6136 First St.
Newfane, NY 14108

HylTech Concrete
CONCRETE CONSTRUCTION
BULLDOZING - EXCAVATION - DUMP TRUCK SERVICE
STONE SLINGER SERVICE - EROSION CONTROL - WASTE MANAGEMENT SYSTEMS

Edward S. (Bubby) Pawlak II
(716) 778-5499

Estimates • Insured • Licensed

**SANBORN HOME
IMPROVEMENT**



ALL TYPES - Siding • Trim • Gutters • Roofs • Decks
DOORS - Entrance • Storm • French • Sliding
WINDOWS - Replacement • Bow • Bay • Garden
GARAGE DOORS - Installed & Serviced

 **CERTIFIED
CONTRACTOR**

Sanborn, NY

John Kisloski
731-3138

Devereaux Antiques

- ▼ Buying & Selling
- ▼ Appraisals
- ▼ Estate Sales

David Devereaux
Proprietor

716.998.7445
lastingglow2@aol.com